

Recombinant Human KLF5 Protein (Leu85-Ala177), N-His tagged

Cat. No. KLF5-3002H **Lot. No.** (See product label)

SPECIFICATION

Product Overview	Recombinant human KLF5 (Leu85-Ala177) protein fused with the N-His tag was expressed in E. coli.
Species	Human
Source	E.coli
ProteinLength	Leu85-Ala177
Molecular Mass	13.01 kDa
Purity	>90 % as determined by SDS-PAGE.
Notes	For research use only.
Storage	Use a manual defrost freezer and avoid repeated freeze thaw cycles. Store at 2 to 8 centigrade for one week. Store at -20 to -80 centigrade for twelve months from the date of receipt.
Storage Buffer	0.01M PBS, pH 7.4, 0.02 % NLS
Reconstitution	Reconstitute in sterile water for a stock solution.
Shipping	In general, proteins are provided as lyophilized powder/frozen liquid. They are

 Tel: 1-631-559-9269 1-516-512-3133

 Email: info@creative-biomart.com  Fax: 1-631-938-8127

 45-1 Ramsey Road, Shirley, NY 11967, USA

shipped out with dry ice/blue ice unless customers require otherwise.

GENE INFORMATION

Gene Name KLF5 Kruppel-like factor 5 (intestinal) [Homo sapiens (human)]

Official Symbol KLF5

Synonyms KLF5; Kruppel-like factor 5 (intestinal); BTEB2; Krueppel-like factor 5; CKLF; IKLF; BTE-binding protein 2; GC box binding protein 2; GC-box-binding protein 2; colon kruppel-like factor; colon krueppel-like factor; transcription factor BTEB2; intestinal-enriched kruppel-like factor; intestinal-enriched krueppel-like factor; basic transcription element binding protein 2; basic transcription element-binding protein 2;

Gene ID 688

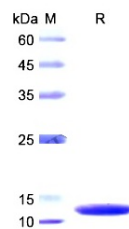
mRNA Refseq NM_001730

Protein Refseq NP_001721

MIM 602903

UniProt ID Q13887

SDS-PAGE



Tel: 1-631-559-9269 1-516-512-3133

Email: info@creative-biomart.com Fax: 1-631-938-8127

45-1 Ramsey Road, Shirley, NY 11967, USA