

Recombinant Human KLF6 Protein (Met1-Ser109)

Cat. No. KLF6-2809H Lot. No. (See product label)

SPECIFICATION

Product Overview	Recombinant human KLF6 (Met1-Ser109) protein fused with out tag was expressed in E. coli.
Species	Human
Source	E.coli
ProteinLength	Met1-Ser109
Molecular Mass	11.99 kDa
Purity	>90 % as determined by SDS-PAGE.
Notes	For research use only.
Storage	Use a manual defrost freezer and avoid repeated freeze thaw cycles. Store at 2 to 8 centigrade for one week. Store at -20 to -80 centigrade for twelve months from the date of receipt.
Storage Buffer	Supplied as solution form in PBS or lyophilized from PBS.
Reconstitution	Reconstitute in sterile water for a stock solution.
Shipping	In general, proteins are provided as lyophilized powder/frozen liquid. They are shipped out with dry ice/blue ice unless customers require otherwise.

 Tel: 1-631-559-9269 1-516-512-3133

 Email: info@creative-biomart.com  Fax: 1-631-938-8127

 45-1 Ramsey Road, Shirley, NY 11967, USA

GENE INFORMATION

Gene Name KLF6 Kruppel-like factor 6 [Homo sapiens (human)]

Official Symbol KLF6

Synonyms KLF6; Kruppel-like factor 6; BCD1, COPEB, core promoter element binding protein, ST12; Krueppel-like factor 6; CPBP; GBF; GC rich binding factor; PAC1; Zf9; proto-oncogene BCD1; GC-rich binding factor; B-cell-derived protein 1; transcription factor Zf9; protooncogene B-cell derived 1; GC-rich sites-binding factor GBF; Kruppel-like zinc finger protein Zf9; core promoter element binding protein; core promoter element-binding protein; suppressor of tumorigenicity 12 protein; suppression of tumorigenicity 12 (prostate); ZF9; BCD1; CBA1; ST12; COPEB; DKFZp686N0199;

Gene ID 1316

mRNA Refseq NM_001160124

Protein Refseq NP_001153596

MIM 602053

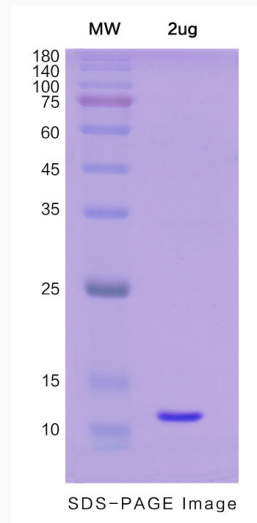
UniProt ID Q99612

 Tel: 1-631-559-9269 1-516-512-3133

 Email: info@creative-biomart.com  Fax: 1-631-938-8127

 45-1 Ramsey Road, Shirley, NY 11967, USA

SDS-PAGE



 Tel: 1-631-559-9269 1-516-512-3133

 Email: info@creative-biomart.com  Fax: 1-631-938-8127

 45-1 Ramsey Road, Shirley, NY 11967, USA