

## Recombinant Human KLF9 protein, His-tagged

**Cat. No.** KLF9-7444H    **Lot. No.** (See product label)

### SPECIFICATION

<b>Product Overview</b>	Recombinant Human KLF9 protein(1-150 aa), fused with N-terminal His tag, was expressed in E.coli.
<b>Species</b>	Human
<b>Source</b>	E.coli
<b>ProteinLength</b>	1-150 aa
<b>Form</b>	The purified protein was lyophilized from sterile phosphate-buffered saline (PBS: 58 mM Na <sub>2</sub> HPO <sub>4</sub> , 17 mM NaH <sub>2</sub> PO <sub>4</sub> , 68 mM NaCl, pH 7.4). Prior to lyophilization, 5% (w/v) trehalose and 5% (w/v) mannitol were incorporated as cryoprotective excipients. The protein was eluted with a buffer containing 300 mM imidazole.
<b>AASequence</b>	MSAAAYMDFVAAQCLVSIENRAAVPEHGVAPDAERLRLPEREVTKEHGDPGDTWK DYCTLVTIAKSLLDLNKYRPIQTSPVCSDSLESPDEDMGSDSDVTTESGSSPSHSPE ERQDPGSAPSPLSLLHPGVAAKKGKHASEKRHKCPYSGC
<b>Purity</b>	85%, by SDS-PAGE with Coomassie Brilliant Blue staining.
<b>Storage</b>	Store at 2-8°C for 1-2 weeks. Aliquot and store at -20°C to -80°C for up to 3 months, reconstitution with sterile water and addition of an equal volume of glycerol. Avoid repeat freeze-thaw cycles.
<b>Reconstitution</b>	Dissolve the product in 200 µl sterile water to achieve a working concentration of 0.25

 Tel: 1-631-559-9269    1-516-512-3133

 Email: [info@creative-biomart.com](mailto:info@creative-biomart.com)     Fax: 1-631-938-8127

 45-1 Ramsey Road, Shirley, NY 11967, USA

g/μl. If experimental compatibility allows, mix the aqueous solution with an equal volume of glycerol (1:1 ratio) after initial reconstitution.

## GENE INFORMATION

<b>Gene Name</b>	KLF9 Kruppel-like factor 9 [ Homo sapiens ]
<b>Official Symbol</b>	KLF9
<b>Synonyms</b>	KLF9; Kruppel-like factor 9; basic transcription element binding protein 1 , BTEB1; Krueppel-like factor 9; BTE-binding protein 1; GC-box-binding protein 1; transcription factor BTEB1; basic transcription element binding protein 1; basic transcription element-binding protein 1; BTEB; BTEB1;
<b>Gene ID</b>	687
<b>mRNA Refseq</b>	NM_001206
<b>Protein Refseq</b>	NP_001197
<b>MIM</b>	602902
<b>UniProt ID</b>	Q13886

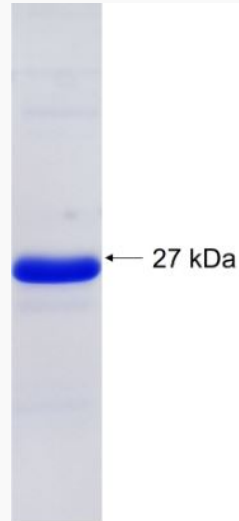
 Tel: 1-631-559-9269 1-516-512-3133

 Email: [info@creative-biomart.com](mailto:info@creative-biomart.com)  Fax: 1-631-938-8127

 45-1 Ramsey Road, Shirley, NY 11967, USA



SDS-PAGE



Tel: 1-631-559-9269 1-516-512-3133

Email: [info@creative-biomart.com](mailto:info@creative-biomart.com) Fax: 1-631-938-8127

45-1 Ramsey Road, Shirley, NY 11967, USA