

Recombinant Human KLHDC2 Protein, His-tagged

Cat. No. KLHDC2-2369H **Lot. No.** (See product label)

SPECIFICATION

Product Overview	Recombinant Human KLHDC2 Protein (Met1-Asp279) with a N-His tag was expressed in E. coli.
Species	Human
Source	E.coli
ProteinLength	Met1-Asp279
Description	This gene encodes a member of the grandular kallikrein protein family. Kallikreins are a subgroup of serine proteases that are clustered on chromosome 19. Members of this family are involved in a diverse array of biological functions. The protein encoded by this gene is a highly active trypsin-like serine protease that selectively cleaves at arginine residues. This protein is primarily expressed in prostatic tissue and is responsible for cleaving pro-prostate-specific antigen into its enzymatically active form. This gene is highly expressed in prostate tumor cells and may be a prognostic maker for prostate cancer risk. Alternate splicing results in both coding and non-coding transcript variants.
Form	Freeze-dried powder
Molecular Mass	Predicted Molecular Mass: 35.4 kDa Accurate Molecular Mass: 35 kDa
Endotoxin	<1.0 EU per 1g (determined by the LAL method).

 Tel: 1-631-559-9269 1-516-512-3133

 Email: info@creative-biomart.com  Fax: 1-631-938-8127

 45-1 Ramsey Road, Shirley, NY 11967, USA

Purity	> 95%
Applications	Positive Control; Immunogen; SDS-PAGE; WB.
Stability	The thermal stability is described by the loss rate. The loss rate was determined by accelerated thermal degradation test, that is, incubate the protein at 37 centigrade for 48h, and no obvious degradation and precipitation were observed. The loss rate is less than 5% within the expiration date under appropriate storage condition.
Storage	Avoid repeated freeze/thaw cycles. Store at 2-8 centigrade for one month. Aliquot and store at -80 centigrade for 12 months.
Storage Buffer	PBS, pH7.4, containing 0.01% SKL, 1mM DTT, 5% Trehalose and Proclin300.
Reconstitution	Reconstitute in 20mM Tris, 150mM NaCl (pH8.0) to a concentration of 0.1-1.0 mg/mL. Do not vortex.

GENE INFORMATION

Gene Name	KLHDC2 kelch domain containing 2 [Homo sapiens (human)]
Official Symbol	KLHDC2
Synonyms	KLHDC2; kelch domain containing 2; kelch domain-containing protein 2; HCLP 1; LCP; host cell factor homolog LCP; host cell factor-like protein 1; hepatocellular carcinoma-associated antigen 33; HCLP-1;
Gene ID	23588
mRNA Refseq	NM_014315

 Tel: 1-631-559-9269 1-516-512-3133

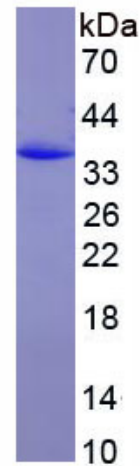
 Email: info@creative-biomart.com  Fax: 1-631-938-8127

 45-1 Ramsey Road, Shirley, NY 11967, USA

Protein Refseq NP_055130

MIM 611280

UniProt ID Q9Y2U9



 Tel: 1-631-559-9269 1-516-512-3133

 Email: info@creative-biomart.com  Fax: 1-631-938-8127

 45-1 Ramsey Road, Shirley, NY 11967, USA