

Recombinant Human KLHDC2 Protein, Myc/DDK-tagged, C13 and N15-labeled

Cat. No. KLHDC2-4482H **Lot. No.** (See product label)

SPECIFICATION

Product Overview	KLHDC2 MS Standard C13 and N15-labeled recombinant protein (NP_055130) with a C-terminal MYC/DDK tag, was expressed in HEK293 cells.
Species	Human
Source	HEK293
Description	KLHDC2 (Kelch Domain Containing 2) is a Protein Coding gene. Diseases associated with KLHDC2 include Ventriculomegaly With Cystic Kidney Disease and Arrhythmogenic Right Ventricular Dysplasia, Familial, 3. An important paralog of this gene is KLHDC1.
Molecular Mass	46.1 kDa
AA Sequence	MADGNEDLRADDLPGPAFESYESMELACPAERSGHVAVSDGRHMFVWGGYKSNQ VRGLYDFYLPREELWIYNMETGRWKKINTEGDVPPSMSGSCAVCVDRLVLYLFGGH HSRGNTNKFYMLDSRSTDRVLQWERIDCQGIPPSSKDKLGVWVYKNKLIFFGGYGY LPEDKVLGTFEFDETSFWNSSHPRGWNDHVHILDTEFTWSQPITTGKAPSPRAAH ACATVGNRGFVFGGRYRDARMNDLHYLNLDTWEWNEIPQGICPVGRSWHSLTPV SSDHLFLFGGFTTDKQPLSDAWTYCISKNEWIQFNHPYTEKRLWHTACASDEGEVI VFGGCANLLVHHRAAHSNEILIFSVQPKSLVRLSLEAVICFKEMPLANSWNCLPKHLL HSVNQRFGSNNTSGSTRTRPLEQKLISEEDLAANDILDYKDDDDKV
Purity	> 80% as determined by SDS-PAGE and Coomassie blue staining

 Tel: 1-631-559-9269 1-516-512-3133

 Email: info@creative-biomart.com  Fax: 1-631-938-8127

 45-1 Ramsey Road, Shirley, NY 11967, USA

Stability	Stable for 3 months from receipt of products under proper storage and handling conditions.
Storage	Store at -80 centigrade. Avoid repeated freeze-thaw cycles.
Concentration	50 µg/mL as determined by BCA
Storage Buffer	100 mM glycine, 25 mM Tris-HCl, pH 7.3.

GENE INFORMATION

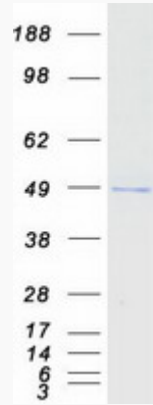
Gene Name	KLHDC2 kelch domain containing 2 [Homo sapiens (human)]
Official Symbol	KLHDC2
Synonyms	KLHDC2; kelch domain containing 2; kelch domain-containing protein 2; HCLP 1; LCP; host cell factor homolog LCP; host cell factor-like protein 1; hepatocellular carcinoma-associated antigen 33; HCLP-1;
Gene ID	23588
mRNA Refseq	NM_014315
Protein Refseq	NP_055130
MIM	611280
UniProt ID	Q9Y2U9

 Tel: 1-631-559-9269 1-516-512-3133

 Email: info@creative-biomart.com  Fax: 1-631-938-8127

 45-1 Ramsey Road, Shirley, NY 11967, USA

SDS-PAGE



 Tel: 1-631-559-9269 1-516-512-3133

 Email: info@creative-biomart.com  Fax: 1-631-938-8127

 45-1 Ramsey Road, Shirley, NY 11967, USA