

# Recombinant Full Length Human KLHDC2 Protein, C-Flag-tagged

**Cat. No.** KLHDC2-828HFL    **Lot. No.** (See product label)

## SPECIFICATION

### Product Overview

Recombinant Full Length Human KLHDC2 Protein, fused to Flag-tag at C-terminus, was expressed in Mammalian cells.

### Species

Human

### Source

Mammalian Cells

### Description

Enables ubiquitin ligase-substrate adaptor activity. Involved in ubiquitin-dependent protein catabolic process via the C-end degron rule pathway. Located in nuclear body and nuclear membrane. Is active in Cul2-RING ubiquitin ligase complex and nucleus.

### Form

25 mM Tris HCl, pH 7.3, 100 mM glycine, 10% glycerol.

### Molecular Mass

45.9 kDa

### AA Sequence

MADGNEDLRADDLPGPAFESYESMELACPAERSGHVAVSDGRHMFVWGGYKSNQ  
 VRGLYDFYLPREELWI YNMETGRWKKINTEGDVPPSMSGSCAVCVDRVLYLFGGH  
 HSRGNTNKFYMLDSRSTDRVLQWERIDCQGI PPSSKDKLGWVYKKNLIFFGGYG  
 YLPEDKVLGTFEDETSEFWNSSHPRGWNDHVVHILDTETFTWSQPIT TGKAPSPRAA  
 HACATVGNRGFVFGGRYRDARMNDLHYLNLDWEWNELIPQGICPVGRSWHSLTP  
 VSSDH LFLFGGFTTDKQPLSDAWTYCISKNEWIQFNHPYTEKPRLWHTACASDEGE  
 VIVFGGCANLLVHHRAAH  
 SNEILIFSVQPKSLVRLSLEAVICFKEMPLANSWNCLPKHLLHSVNQRFGSNNTSGSTR  
 TRPLEQKLISEEDLAANDILDYKDDDDKV

 Tel: 1-631-559-9269    1-516-512-3133

 Email: [info@creative-biomart.com](mailto:info@creative-biomart.com)     Fax: 1-631-938-8127

 45-1 Ramsey Road, Shirley, NY 11967, USA

<b>Purity</b>	> 80% as determined by SDS-PAGE and Coomassie blue staining.
<b>Stability</b>	Stable for 12 months from the date of receipt of the product under proper storage and handling conditions. Avoid repeated freeze-thaw cycles.
<b>Storage</b>	Store at -80 centigrade.
<b>Concentration</b>	>50 ug/mL as determined by microplate BCA method.
<b>Preparation</b>	Recombinant protein was captured through anti-DDK affinity column followed by conventional chromatography steps.
<b>Full Length</b>	Full L.

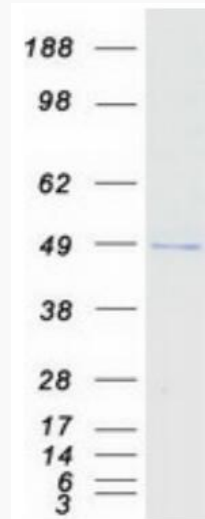
## GENE INFORMATION

<b>Gene Name</b>	KLHDC2 kelch domain containing 2 [ Homo sapiens (human) ]
<b>Official Symbol</b>	KLHDC2
<b>Synonyms</b>	LCP; HCLP1; HCLP-1
<b>Gene ID</b>	23588
<b>mRNA Refseq</b>	NM_014315.3
<b>Protein Refseq</b>	NP_055130.1
<b>MIM</b>	611280
<b>UniProt ID</b>	Q9Y2U9

 Tel: 1-631-559-9269 1-516-512-3133

 Email: [info@creative-biomart.com](mailto:info@creative-biomart.com)  Fax: 1-631-938-8127

 45-1 Ramsey Road, Shirley, NY 11967, USA



Coomassie blue staining of purified KLHDC2 protein.

 Tel: 1-631-559-9269 1-516-512-3133

 Email: [info@creative-biomart.com](mailto:info@creative-biomart.com)  Fax: 1-631-938-8127

 45-1 Ramsey Road, Shirley, NY 11967, USA