

Recombinant Full Length Human KLHL2 Protein, C-Flag-tagged

Cat. No. KLHL2-1426HFL **Lot. No.** (See product label)

SPECIFICATION

Product Overview	Recombinant Full Length Human KLHL2 Protein, fused to Flag-tag at C-terminus, was expressed in Mammalian cells.
Species	Human
Source	Mammalian Cells
Description	Enables actin binding activity and identical protein binding activity. Predicted to be involved in protein ubiquitination. Located in actin cytoskeleton.
Form	25 mM Tris HCl, pH 7.3, 100 mM glycine, 10% glycerol.
Molecular Mass	65.8 kDa
AA Sequence	<p>METPPLPPACTKQGHQKPLDSKDDNTEKHCPVTVNPWHMKKAFKVMNELRSQNL CDVTIVAEDMEISAH RVVLAACSPYFHAMFTGEMSESRAKRVRIKEVDGWTLRMLID YVYTAEIQVTEENVQVLLPAAGLLQLQD VKKTCCEFLESQHPVNCLGIRAFADMHA CTDLLNKANTYAEQHFADVVLSEEFNLGIEQVCSLISSDK LTISSEEKVFEAVIAWV NHDKDVRQEFMARLMEHVRLPLLPREYLVQRVEEEALVKNSSACKDYIEAMK YHL LPTEQRILMKSVRTRLRTPMNLPKLMVVVGGQAPKAIRSVCEYDFKEERWHQVAEL PSRRCRAGMVY MAGLVFAVGGFNGSLRVRTVDSYDPVKDQWTSVANMRDRRSTL GAAVLNGLLYAVGGFDGSTGLSSVEAY NIKSNEWFHVAPMNTRRSSVGVGVVGG LYAVGGYDVASRQCLSTVECYNATTNEWTYIAEMSTRRSGAG VGVLNNLLYAVGG HDGPLVRKSVEVYDPTTNAWRQVADMNMCRRNAGVCAVNGLLYVVGDDGSCNL</p>

 Tel: 1-631-559-9269 1-516-512-3133

 Email: info@creative-biomart.com  Fax: 1-631-938-8127

 45-1 Ramsey Road, Shirley, NY 11967, USA

	ASV EYYNPTTDKWTVVSSCMSTGRSYAGVTVIDKRLTRTRPLEQKLISEEDLAANDILDYK DDDDKV
Purity	> 80% as determined by SDS-PAGE and Coomassie blue staining.
Stability	Stable for 12 months from the date of receipt of the product under proper storage and handling conditions. Avoid repeated freeze-thaw cycles.
Storage	Store at -80 centigrade.
Concentration	>50 ug/mL as determined by microplate BCA method.
Preparation	Recombinant protein was captured through anti-DDK affinity column followed by conventional chromatography steps.
Full Length	Full L.

GENE INFORMATION

Gene Name	KLHL2 kelch like family member 2 [Homo sapiens (human)]
Official Symbol	KLHL2
Synonyms	MAV; MAYVEN; ABP-KELCH
Gene ID	11275
mRNA Refseq	NM_007246.4
Protein Refseq	NP_009177.3

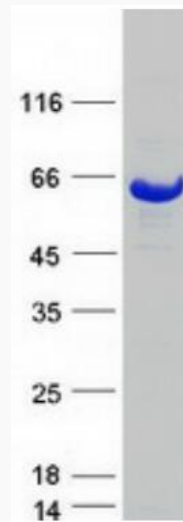
 Tel: 1-631-559-9269 1-516-512-3133

 Email: info@creative-biomart.com  Fax: 1-631-938-8127

 45-1 Ramsey Road, Shirley, NY 11967, USA

MIM 605774

UniProt ID O95198



Coomassie blue staining of purified KLHL2 protein.

Tel: 1-631-559-9269 1-516-512-3133

Email: info@creative-biomart.com Fax: 1-631-938-8127

45-1 Ramsey Road, Shirley, NY 11967, USA