

Recombinant Human KLHL21 protein, GST-tagged

Cat. No. KLHL21-7874H **Lot. No.** (See product label)

SPECIFICATION

Product Overview	Recombinant Human KLHL21 protein(240-597 aa), fused with N-terminal GST tag, was expressed in E. coli.
Species	Human
Source	E. coli
ProteinLength	240-597 aa
Form	The purified protein was lyophilized from sterile phosphate-buffered saline (PBS: 58 mM Na ₂ HPO ₄ , 17 mM NaH ₂ PO ₄ , 68 mM NaCl, pH 8.0). Prior to lyophilization, 5% (w/v) trehalose and 5% (w/v) mannitol were incorporated as cryoprotective excipients. The protein was eluted with a buffer containing 100 mM reduced glutathione (GSH).
AASequence	AEPLVARCPPCLRLLREARDFQAARYDRHDRGPCPRMRPRPSTGLAEILVLVGGCD QDCDELVTDCYNPQTGQWRYLAEFPDHLGGGYSIVALGNDIYVTGGSDGSRLYD CVWRYNSSVNEWAEVAPMLKAREYHSSSVLDGLLYVVAADSTERYDHTTDSWEAL QPMTYPM DNCSTTACRGRLYAIGSLAGKETMVMQCYPDPTDLWVSLVDCGQLPPW SFAPKTATLNL MYFVRDDSAEVDVYNPTRNEWDKIPSMNQVHVGGSLAVLGGKLY VSGGYDNTFELSDVVEAYDPETRAWSVVGRLPEPTFWHGSVSIFRQFMPQTFSGG RGFELDSGSDMDPGRPRPPRDPDELH
Purity	85%, by SDS-PAGE.

 Tel: 1-631-559-9269 1-516-512-3133

 Email: info@creative-biomart.com  Fax: 1-631-938-8127

 45-1 Ramsey Road, Shirley, NY 11967, USA

Storage Store at 2-8°C for 1-2 weeks. Aliquot and store at -20°C to -80°C for up to 3 months, reconstitution with sterile water and addition of an equal volume of glycerol. Avoid repeat freeze-thaw cycles.

Reconstitution It is recommended that sterile water be added to the vial to prepare a stock solution of 0.25 ug/ul. Centrifuge the vial at 4°C before opening to recover the entire contents.

GENE INFORMATION

Gene Name KLHL21 kelch-like 21 (Drosophila) [Homo sapiens]

Official Symbol KLHL21

Synonyms KLHL21; kelch-like 21 (Drosophila); kelch-like protein 21; KIAA0469; MGC99635;

mRNA Refseq NM_014851

Protein Refseq NP_055666

UniProt ID Q9UJP4

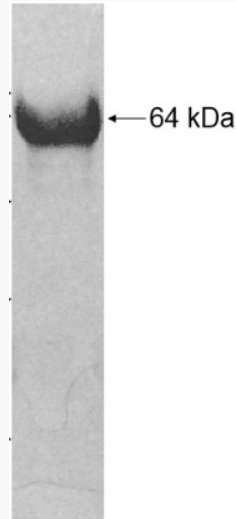
Gene ID 9903

 Tel: 1-631-559-9269 1-516-512-3133

 Email: info@creative-biomart.com  Fax: 1-631-938-8127

 45-1 Ramsey Road, Shirley, NY 11967, USA

SDS-PAGE



 Tel: 1-631-559-9269 1-516-512-3133

 Email: info@creative-biomart.com  Fax: 1-631-938-8127

 45-1 Ramsey Road, Shirley, NY 11967, USA