

Recombinant Human KLHL25 Protein, GST-tagged

Cat. No. KLHL25-4019H Lot. No. (See product label)

SPECIFICATION

Product Overview Human ENC2 full-length ORF (AAH28100, 1 a.a. - 589 a.a.) recombinant protein with GST-tag at N-terminal.

Species Human

Source Wheat Germ

Description KLHL25 (Kelch Like Family Member 25) is a Protein Coding gene. Among its related pathways are Innate Immune System and Class I MHC mediated antigen processing and presentation. An important paralog of this gene is ENC1.

Molecular Mass 90.64 kDa

AA Sequence

MSVSVHETRKSRSSTGSMNVTLFHKASHPDCVLAHLNLRKHKCMFTDVTWAGDR
AFPCHRAVLAASSRYFEAMFSHGLRESRDDTVNFQDNLHPEVLELLDFAYSSRIAI
NEENAESLLEAGDMLQFHDVRDAAAEFLEKNLFPSNCLGMMLLSDAHQCRRLYEFS
WRMCLVHFETVRQSEDFNSLSKDTLLDLISSDELETEDEDERVVFEAILQWVKHDLEPR
KVHLPPELLRSVRLALLPSDCLQEAVSSEALLMADERTKLIMDEALRCKTRILQNDGVV
TSPCARPRKAGHTLLILGGQTFMCDKIYQVDHKAKEIIPKADLPSRKEFSASAIGCK
VYVTGGRGSENGVSKDVWVYDTVHEEWSKAAPMLIARFGHGSAELENCLYVVGGH
TSLAGVFPASPSVSLKQVEKYDPGANKWMMVAPLRDGVSNAAVVS AKLKLFFVGG
TSIHRDMVSKVQCYDPSENRTIKAECPQPWRYTAAAVLGSQIFIMGGDTEFTAAS
AYRFDCE TNQWTRIGDMTAKRMSCHALASGNKLYVVG GYFGTQRCKTLDCYDPTS
DTWNCITVPYSLIPTAFVSTWKHLPA

 Tel: 1-631-559-9269 1-516-512-3133

 Email: info@creative-biomart.com  Fax: 1-631-938-8127

 45-1 Ramsey Road, Shirley, NY 11967, USA



Applications	Enzyme-linked Immunoabsorbent Assay Western Blot (Recombinant protein) Antibody Production Protein Array
Notes	Best use within three months from the date of receipt of this protein.
Storage	Store at -80 centigrade. Aliquot to avoid repeated freezing and thawing.
Storage Buffer	50 mM Tris-HCl, 10 mM reduced Glutathione, pH=8.0 in the elution buffer.

GENE INFORMATION

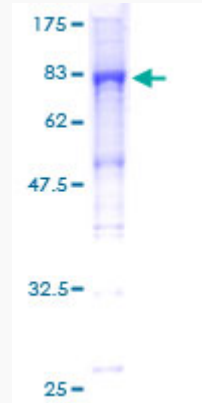
Gene Name	KLHL25 kelch-like 25 (Drosophila) [Homo sapiens]
Official Symbol	KLHL25
Synonyms	KLHL25; kelch-like 25 (Drosophila); ectoderm-neural cortex protein 2; ectodermal neural cortex 2; ENC 2; ENC2; FLJ12587; kelch-like protein 25; ectodermal-neural cortex 2; BTB/POZ KELCH domain protein; ENC-2; FLJ45015;
Gene ID	64410
mRNA Refseq	NM_022480
Protein Refseq	NP_071925
UniProt ID	Q9H0H3

Tel: 1-631-559-9269 1-516-512-3133

Email: info@creative-biomart.com Fax: 1-631-938-8127

45-1 Ramsey Road, Shirley, NY 11967, USA

**Quality Control
Testing**



12.5% SDS-PAGE Stained with Coomassie Blue.

 Tel: 1-631-559-9269 1-516-512-3133

 Email: info@creative-biomart.com  Fax: 1-631-938-8127

 45-1 Ramsey Road, Shirley, NY 11967, USA