

Recombinant Human KLHL26 Protein, Myc/DDK-tagged, C13 and N15-labeled

Cat. No. KLHL26-4362H **Lot. No.** (See product label)

SPECIFICATION

Product Overview	KLHL26 MS Standard C13 and N15-labeled recombinant protein (NP_060786) with a C-terminal MYC/DDK tag, was expressed in HEK293 cells.
Species	Human
Source	HEK293
Description	KLHL26 (Kelch Like Family Member 26) is a Protein Coding gene. Diseases associated with KLHL26 include Bilateral Retinoblastoma and Ebstein Anomaly. An important paralog of this gene is KLHL13.
Molecular Mass	68.2 kDa
AA Sequence	<p>MAESGGSSGGAGGGGAFGAGPGPERPNSTADKNGALKCTFSAPSHSTSLQGLAT LRAQQQLLDVVLINREAFPAAHKVVLAACSDYFRAMFTGGMREASQDVIELKGV SAR GLRHIIDFAYS AEVTLDLDCVQDVLGAAVFLQMLPVVELCEEFLKAAMSVETCLNIGQ MATTFSLASLRESVDAFTFRHFLQIAEEEDFLRLPLERLVFFLQSNRLQSCAEIDL FRA AVRWLQHDPARRPRASHVLCHIRFPLMQSSELVDSVQTLDIMVEDVLCRQYLLEAF NYQVLPFRQHMQSPRTAVRSDVPSLVTFGGTPYTDSDRSVSSKVYQLPEPGARH FRELTEMEVGCSTCVAVLDNFVYVAGGQHLQYRSGEGAVDACRYRDPHLNRWLR LQAMQESRIQFQLNVLCGMVYATGGRNRAGSLASVERYCPRRNEWGYACSLKRRT WGHAGAASGGRLYISGGYGISVEDKKALHCYDPVADQWEFKAPMSEPRVLHAMVG AGGRIYALGGRMDHVDRCFDVLAVEYYVPETDQWTSMSPMRAGQSEAGCCLLER</p>

 Tel: 1-631-559-9269 1-516-512-3133

 Email: info@creative-biomart.com  Fax: 1-631-938-8127

 45-1 Ramsey Road, Shirley, NY 11967, USA

KIYIVGGYNWRLNNVTGIVQVYNTDTDEWERDLHFPESFAGIACAPVLLPRAGTRRT
RTRPLEQKLISEEDLAANDILDYKDDDDKV

Purity > 80% as determined by SDS-PAGE and Coomassie blue staining

Stability Stable for 3 months from receipt of products under proper storage and handling conditions.

Storage Store at -80 centigrade. Avoid repeated freeze-thaw cycles.

Concentration 50 µg/mL as determined by BCA

Storage Buffer 100 mM glycine, 25 mM Tris-HCl, pH 7.3.

GENE INFORMATION

Gene Name KLHL26 kelch like family member 26 [Homo sapiens (human)]

Official Symbol KLHL26

Synonyms KLHL26; kelch like family member 26; kelch-like protein 26; kelch-like 26

Gene ID 55295

mRNA Refseq NM_018316

Protein Refseq NP_060786

UniProt ID Q53HC5

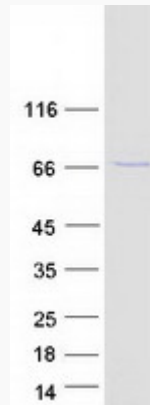
 Tel: 1-631-559-9269 1-516-512-3133

 Email: info@creative-biomart.com  Fax: 1-631-938-8127

 45-1 Ramsey Road, Shirley, NY 11967, USA



SDS-PAGE



Tel: 1-631-559-9269 1-516-512-3133

Email: info@creative-biomart.com Fax: 1-631-938-8127

45-1 Ramsey Road, Shirley, NY 11967, USA