

# Recombinant Full Length Human KLHL3 Protein, C-Flag-tagged

Cat. No. KLHL3-1136HFL Lot. No. (See product label)

## SPECIFICATION

<b>Product Overview</b>	Recombinant Full Length Human KLHL3 Protein, fused to Flag-tag at C-terminus, was expressed in Mammalian cells.
<b>Species</b>	Human
<b>Source</b>	Mammalian Cells
<b>Description</b>	This gene is ubiquitously expressed and encodes a full-length protein which has an N-terminal BTB domain followed by a BACK domain and six kelch-like repeats in the C-terminus. These kelch-like repeats promote substrate ubiquitination of bound proteins via interaction of the BTB domain with the CUL3 (cullin 3) component of a cullin-RING E3 ubiquitin ligase (CRL) complex. Mutations in this gene cause pseudohypoaldosteronism type IID (PHA2D); a rare Mendelian syndrome featuring hypertension, hyperkalaemia and metabolic acidosis. Alternative splicing results in multiple transcript variants encoding distinct isoforms.
<b>Form</b>	25 mM Tris HCl, pH 7.3, 100 mM glycine, 10% glycerol.
<b>Molecular Mass</b>	64.8 kDa
<b>AA Sequence</b>	MEGESVKLSSQTLIQAGDDEKNQRTITVNP AHMGKAFKVMNELRSKQLLCDVMIVA EDVEIEAHRVVLAA CSPYFCAMFTGDMSESKAKKIEIKDVDGQTLSKLIDYIYTAEIEV TEENVQVLLPAASLLQLMDVRQNC DFLQSQLHPTNCLGIRAFADVHTCTDLLQQA NAYAEQHFPEVMLGEEFLSLSLDQVCSLISSDKLTVSSE EKVFEAVISWINYEKETRL

 Tel: 1-631-559-9269 1-516-512-3133

 Email: [info@creative-biomart.com](mailto:info@creative-biomart.com)  Fax: 1-631-938-8127

 45-1 Ramsey Road, Shirley, NY 11967, USA

EHMAKLMEHVRLPLLPRDYLVQTVEEEEALIKNNNTCKDFLIEAMKYHLLPL DQRLLIK  
 NPRTKPRTPVSLPKVMIVVGGQAPKAIRSVCEYDFEEDRWQIAELPSRRCRAGVV  
 FMAGHVV AVGGFNGSLRVRTVDVYDGVKDQWTSIASMQERRSTLGA AVLNDLLYA  
 VGGFDGSTGLASVEAYSYKTNE WFFVAPMNTRRSSVGVGVVEGKLYAVGGYDGA  
 SRQCLSTVEQYNPATNEWIYVADMSTRRSAGVGVLSG QLYATGGHDGPLVRKSV  
 EVYDPGTNTWKQVADMNMCRRNAGVCAVNGLLYVGGDDGSCNLASVEYYNPV  
 TDKWTLPTNMSTGRSYAGVAVIHKSLTRTRPLEQKLISEEDLAANDILDYKDDDDKV

**Purity** > 80% as determined by SDS-PAGE and Coomassie blue staining.

**Stability** Stable for 12 months from the date of receipt of the product under proper storage and handling conditions. Avoid repeated freeze-thaw cycles.

**Storage** Store at -80 centigrade.

**Concentration** >50 ug/mL as determined by microplate BCA method.

**Preparation** Recombinant protein was captured through anti-DDK affinity column followed by conventional chromatography steps.

**Full Length** Full L.

## GENE INFORMATION

**Gene Name** [KLHL3 kelch like family member 3 \[ Homo sapiens \(human\) \]](#)

**Official Symbol** [KLHL3](#)

**Synonyms** PHA2D

**Gene ID** [26249](#)

 Tel: 1-631-559-9269 1-516-512-3133

 Email: [info@creative-biomart.com](mailto:info@creative-biomart.com)  Fax: 1-631-938-8127

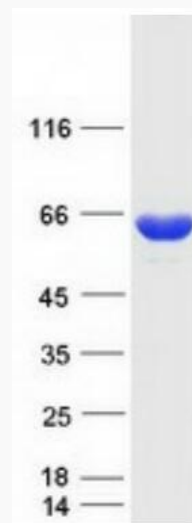
 45-1 Ramsey Road, Shirley, NY 11967, USA

mRNA Refseq [NM\\_017415.3](#)

Protein Refseq [NP\\_059111.2](#)

MIM [605775](#)

UniProt ID [Q9UH77](#)



Coomassie blue staining of purified KLHL3 protein.

 Tel: 1-631-559-9269 1-516-512-3133

 Email: [info@creative-biomart.com](mailto:info@creative-biomart.com)  Fax: 1-631-938-8127

 45-1 Ramsey Road, Shirley, NY 11967, USA