

Recombinant Human KLHL3 protein, His-tagged

Cat. No. KLHL3-1410H Lot. No. (See product label)

SPECIFICATION

| | |
|-------------------------|--|
| Product Overview | Recombinant Human KLHL3 protein(1-301 aa), fused with N-terminal His tag, was expressed in E.coli. |
| Species | Human |
| Source | E.coli |
| ProteinLength | 1-301 aa |
| Form | The purified protein was lyophilized from sterile phosphate-buffered saline (PBS: 58 mM Na ₂ HPO ₄ , 17 mM NaH ₂ PO ₄ , 68 mM NaCl, pH 7.4). Prior to lyophilization, 5% (w/v) trehalose and 5% (w/v) mannitol were incorporated as cryoprotective excipients. The protein was eluted with a buffer containing 300 mM imidazole. |
| AASequence | MEGESVKLSSQTLIQAGDDEKNQRTITVNP AHMGKAFKVMNELRSKQLLCDVMIVA EDVEIEAHRVVLAACSPYFCAMFTGDMSES KAKKIEIKDVDGQTL SKLIDYIYTAEIEV TEENVQVLLPAASLLQLMDVRQNC CDFLQSQLHPTNCLGIRAFADVHTCTDLLQQA NAYAEQHFPEVMLGEEFLSLSLDQVCS LISSDKLTVSSEEKVFEAVISWINEYKETRL EHMAKLMEHVRLPLLPRDYLVQTV EEEALIKNNNTCKDFLIEAMKYHLLPLDQRLLIK NPRTKPRTPVSLPK |
| Purity | 85%, by SDS-PAGE with Coomassie Brilliant Blue staining. |
| Storage | Store at 2-8°C for 1-2 weeks. Aliquot and store at -20°C to -80°C for up to 3 months, reconstitution with sterile water and addition of an equal volume of glycerol. Avoid |

Tel: 1-631-559-9269 1-516-512-3133

Email: info@creative-biomart.com Fax: 1-631-938-8127

45-1 Ramsey Road, Shirley, NY 11967, USA

repeat freeze-thaw cycles.

Reconstitution

Dissolve the product in 200 µl sterile water to achieve a working concentration of 0.25 g/µl. If experimental compatibility allows, mix the aqueous solution with an equal volume of glycerol (1:1 ratio) after initial reconstitution.

GENE INFORMATION

Gene Name [KLHL3 kelch-like 3 \(Drosophila\) \[Homo sapiens \]](#)

Official Symbol [KLHL3](#)

Synonyms [KLHL3](#); [kelch-like 3 \(Drosophila\)](#); [kelch \(Drosophila\) like 3](#); [kelch-like protein 3](#); [KIAA1129](#); [PHA2D](#); [FLJ40871](#); [MGC44594](#);

Gene ID [26249](#)

mRNA Refseq [NM_001257194](#)

Protein Refseq [NP_001244123](#)

MIM [605775](#)

UniProt ID [Q9UH77](#)

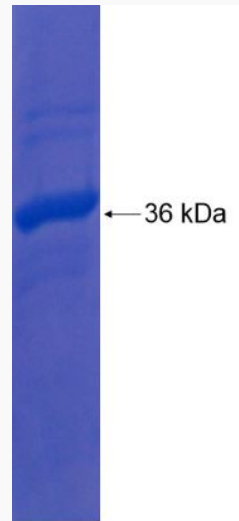
 Tel: 1-631-559-9269 1-516-512-3133

 Email: info@creative-biomart.com  Fax: 1-631-938-8127

 45-1 Ramsey Road, Shirley, NY 11967, USA



SDS-PAGE



Tel: 1-631-559-9269 1-516-512-3133

Email: info@creative-biomart.com Fax: 1-631-938-8127

45-1 Ramsey Road, Shirley, NY 11967, USA