

Recombinant Human KLHL3 Protein, Myc/DDK-tagged, C13 and N15-labeled

Cat. No. KLHL3-2011H **Lot. No.** (See product label)

SPECIFICATION

| | |
|-------------------------|---|
| Product Overview | KLHL3 MS Standard C13 and N15-labeled recombinant protein (NP_059111) with a C-terminal MYC/DDK tag, was expressed in HEK293 cells. |
| Species | Human |
| Source | HEK293 |
| Description | This gene is ubiquitously expressed and encodes a full-length protein which has an N-terminal BTB domain followed by a BACK domain and six kelch-like repeats in the C-terminus. These kelch-like repeats promote substrate ubiquitination of bound proteins via interaction of the BTB domain with the CUL3 (cullin 3) component of a cullin-RING E3 ubiquitin ligase (CRL) complex. Mutations in this gene cause pseudohypoaldosteronism type IID (PHA2D); a rare Mendelian syndrome featuring hypertension, hyperkalaemia and metabolic acidosis. Alternative splicing results in multiple transcript variants encoding distinct isoforms. |
| Molecular Mass | 64.8 kDa |
| AA Sequence | MEGESVKLSSQTLIQAGDDEKNQRTITVNP AHMGKAFKVMNELRSKQLLCDVMIVA EDVEIEAHRV VLAACSPYFCAMFTGDMSESKAKKIEIKDVDGQTLSKLIDYIYTAEIEV TEENVQVLLPAASLLQLMDVRQNCCDFLQSQLHPTNCLGIRAFADVHTCTDLLQQA NAYAEQHFPEVMLGEEFLSLSLDQVCSLISSDKLTVSSEEKVFEAVISWINEYKETRL EHMAKLMEHVRLPLLPRDYLVQTVEEEALIKNNNTCKDFLIEAMKYHLLPLDQRLLIK |

 Tel: 1-631-559-9269 1-516-512-3133

 Email: info@creative-biomart.com  Fax: 1-631-938-8127

 45-1 Ramsey Road, Shirley, NY 11967, USA

NPRTKPRTPVSLPKVMIVVGGQAPKAIRSVCEYDFEEDRWDQIAELPSRRCRAGVV
 FMAGHVYAVGGFNGSLRVRTVDVYDGVKQWTSIASMQRERSTLGA AVLNDLLYA
 VGGFDGSTGLASVEAYSYKTNEWFFVAPMNTRRSSVGVGVVEGKLYAVGGYDGAS
 RQCLSTVEQYNPATNEWIYVADMSTRRSRGAGVGVLSGQLYATGGHDGPLVRKSVE
 VYDPGTNTWKQVADMNMCRRNAGVCAVNGLLYVVGDDGSCNLA SVEYYNPVTD
 KWTLPTNMSTGRSYAGVAVIHKSLTRTRPLEQKLISEEDLAANDILDYKDDDDKV

| | |
|-----------------------|--|
| Purity | > 80% as determined by SDS-PAGE and Coomassie blue staining |
| Stability | Stable for 3 months from receipt of products under proper storage and handling conditions. |
| Storage | Store at -80 centigrade. Avoid repeated freeze-thaw cycles. |
| Concentration | 50 µg/mL as determined by BCA |
| Storage Buffer | 100 mM glycine, 25 mM Tris-HCl, pH 7.3. |

GENE INFORMATION

| | |
|------------------------|---|
| Gene Name | KLHL3 kelch like family member 3 [Homo sapiens (human)] |
| Official Symbol | KLHL3 |
| Synonyms | KLHL3; kelch-like 3 (Drosophila); kelch (Drosophila) like 3; kelch-like protein 3; KIAA1129; PHA2D; FLJ40871; MGC44594; |
| Gene ID | 26249 |
| mRNA Refseq | NM_017415 |

 Tel: 1-631-559-9269 1-516-512-3133

 Email: info@creative-biomart.com  Fax: 1-631-938-8127

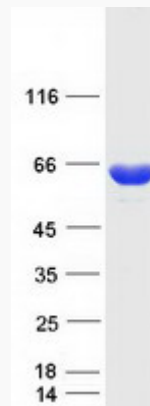
 45-1 Ramsey Road, Shirley, NY 11967, USA

Protein Refseq NP_059111

MIM 605775

UniProt ID Q9UH77

SDS-PAGE



 Tel: 1-631-559-9269 1-516-512-3133

 Email: info@creative-biomart.com  Fax: 1-631-938-8127

 45-1 Ramsey Road, Shirley, NY 11967, USA