

Recombinant Human KLHL30 Protein, Myc/DDK-tagged, C13 and N15-labeled

Cat. No. KLHL30-1824H **Lot. No.** (See product label)

SPECIFICATION

Product Overview	KLHL30 MS Standard C13 and N15-labeled recombinant protein (NP_940984) with a C-terminal MYC/DDK tag, was expressed in HEK293 cells.
Species	Human
Source	HEK293
Description	KLHL30 (Kelch Like Family Member 30) is a Protein Coding gene. An important paralog of this gene is KLHL21.
Molecular Mass	63.8 kDa
AA Sequence	<p>MVRNVDDLDFHLP SHAQDMLDGLQRLRSQP KLADV TLLVGGRELPCHRG LLLALSSP YFHAMFAGDFAESFSARVELRDVEPAVVGQLVDFVYTGR LTITQGNVEALTRTAARL HFPSVQKVCGRYLQQQLDAANCLGICEFGGEQQG LLGVAAKAWAFLRENFEAVARE DEFLQLPRERLVTCLAGDLLQVQPEQSRLEALMRWVRHDPQARAAHLPELLSLVHL DAVPRPCVQQLLASEPLIQESEACRAALSQGH DGAPLALQQKLEEVLVVVGGQALE EEEAGEEPTPGLGNFAFYNSKAKRWMALPDFPDYHKWGFSLAALNNNIYVTGGSR GTKTDTWSTTQAWCFPLKEASWKPVAPMLKPR TNHASAALNGEIYVIGGTTLDVVE VESYDPYTD SWTPVSPALKYVSNFSAAGCRGR LYLVGSSACKYNALALQCYNPVTD AWSVIASPFLPKYLSSPRCAALHGELYLIGDNTKKVYVYDPGANLWQKVQSQHS LH ENGALVPLGDALYVTGGRWQGMEDYHVEMEAYD TVRDTWTRHGALPRLWL YHG ASTVFLDVSKWTQPSGPTQEHRTRPLEQKLISEEDLAANDILDYKDDDDKV</p>

 Tel: 1-631-559-9269 1-516-512-3133

 Email: info@creative-biomart.com  Fax: 1-631-938-8127

 45-1 Ramsey Road, Shirley, NY 11967, USA

Purity	> 80% as determined by SDS-PAGE and Coomassie blue staining
Stability	Stable for 3 months from receipt of products under proper storage and handling conditions.
Storage	Store at -80 centigrade. Avoid repeated freeze-thaw cycles.
Concentration	50 µg/mL as determined by BCA
Storage Buffer	100 mM glycine, 25 mM Tris-HCl, pH 7.3.

GENE INFORMATION

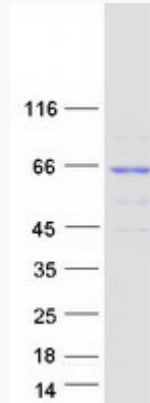
Gene Name	KLHL30 kelch like family member 30 [Homo sapiens (human)]
Official Symbol	KLHL30
Synonyms	KLHL30; kelch-like 30 (Drosophila); kelch-like protein 30; kelch-like 30
Gene ID	377007
mRNA Refseq	NM_198582
Protein Refseq	NP_940984
UniProt ID	Q0D2K2

 Tel: 1-631-559-9269 1-516-512-3133

 Email: info@creative-biomart.com  Fax: 1-631-938-8127

 45-1 Ramsey Road, Shirley, NY 11967, USA

SDS-PAGE



 Tel: 1-631-559-9269 1-516-512-3133

 Email: info@creative-biomart.com  Fax: 1-631-938-8127

 45-1 Ramsey Road, Shirley, NY 11967, USA