

# Recombinant Human KLHL36 Protein (1-553 aa), His-SUMO-tagged

**Cat. No.** KLHL36-1096H    **Lot. No.** (See product label)

## SPECIFICATION

<b>Product Overview</b>	Recombinant Human KLHL36 Protein (1-553 aa) is produced by E. coli expression system. This protein is fused with a 6xHis-SUMO tag at the N-terminal. Research Area: Cell Biology. Protein Description: Full Length of Isoform 2.
<b>Species</b>	Human
<b>Source</b>	E.coli
<b>ProteinLength</b>	1-553 aa
<b>Description</b>	Probable substrate-specific adapter of an E3 ubiquitin-protein ligase complex which mediates the ubiquitination and subsequent proteasomal degradation of target proteins.
<b>Form</b>	Tris-based buffer, 50% glycerol
<b>Molecular Mass</b>	78.8 kDa
<b>AA Sequence</b>	MMEGSRQTRVSRPYKISESSKVYRWADHSSTVLQRLNEQRLRGLFCDVVLVADEQ RVPAPHRNLLAVCSDYFNMFMTIGMREAFQKEVELIGASYIGLKAVVDFLYGGELVLD GGNIDYVLETAHLLQIWTVVDFCCEYLEQEVSIEDNYLYLQELASIYSLKRLDAFIDGFI LNHFGTLSFTPDFLQNVSMQKLCVYLLSSSEVQRECEHDLLQAALQWLTQQPEREAH ARQVLENIHFPLIPKNDLLHRVKPAVCSLLPKEANCEGFIEAVRYHNNLAAQPMQMT KRTALRTNQERLLFVGGEVSERCLELSDDTCYLDAKSEQWVKETPLPARRSHHCVA

 Tel: 1-631-559-9269    1-516-512-3133

 Email: [info@creative-biomart.com](mailto:info@creative-biomart.com)     Fax: 1-631-938-8127

 45-1 Ramsey Road, Shirley, NY 11967, USA

VLGGFIFIAGGSFSRDNGGDAASNLLYRFTYGHAGTIYKDFVYISGGHDYQIGPYRKN  
 LLCYDHRTDVWEERRPMTTARGWHSMCSLGDISIYSIGGSDDNIESMERFDVLGVEA  
 YSPQCNQWTRVAPLLHANSESGVAVWEGRIYILGGYSWENTAFSKTVQVYDREAD  
 KWSRGVDLPKAIAGGSACVCALEPRPEDKKKKKGKGRHQDRGQ

**Purity** > 90% as determined by SDS-PAGE.

**Notes** Repeated freezing and thawing is not recommended. Store working aliquots at 4 centigrade for up to one week.

**Storage** The shelf life is related to many factors, storage state, buffer ingredients, storage temperature and the stability of the protein itself. Generally, the shelf life of liquid form is 6 months at -20 centigrade/-80 centigrade. The shelf life of lyophilized form is 12 months at -20 centigrade/-80 centigrade.

**Concentration** A hardcopy of COA with concentration instruction is sent along with the products.

## GENE INFORMATION

**Gene Name** [KLHL36 kelch-like 36 \(Drosophila\) \[ Homo sapiens \]](#)

**Official Symbol** [KLHL36](#)

**Synonyms** KLHL36; FLJ12543; C16orf44;

**Gene ID** [79786](#)

**mRNA Refseq** [NM\\_024731](#)

**Protein Refseq** [NP\\_079007](#)

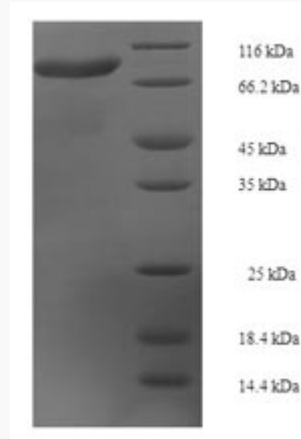
 Tel: 1-631-559-9269 1-516-512-3133

 Email: [info@creative-biomart.com](mailto:info@creative-biomart.com)  Fax: 1-631-938-8127

 45-1 Ramsey Road, Shirley, NY 11967, USA

UniProt ID

Q8N4N3



(Tris-Glycine gel) Discontinuous SDS-PAGE (reduced) with 5% enrichment gel and 15% separation gel.

 Tel: 1-631-559-9269 1-516-512-3133

 Email: [info@creative-biomart.com](mailto:info@creative-biomart.com)  Fax: 1-631-938-8127

 45-1 Ramsey Road, Shirley, NY 11967, USA