

Recombinant Human KLHL6 Protein, Myc/DDK-tagged, C13 and N15-labeled

Cat. No. KLHL6-3691H Lot. No. (See product label)

SPECIFICATION

Product Overview

KLHL6 MS Standard C13 and N15-labeled recombinant protein (NP_569713) with a C-terminal MYC/DDK tag, was expressed in HEK293 cells.

Species

Human

Source

HEK293

Description

This gene encodes a member of the kelch-like (KLHL) family of proteins, which is involved in B-lymphocyte antigen receptor signaling and germinal-center B-cell maturation. The encoded protein contains an N-terminal broad-complex, tramtrack and bric a brac (BTB) domain that facilitates protein binding and dimerization, a BTB and C-terminal kelch (BACK) domain, and six C-terminal kelch repeat domains. Naturally occurring mutations in this gene are associated with chronic lymphocytic leukemia. Alternative splicing results in multiple transcript variants.

Molecular Mass

69.2 kDa

AA Sequence

MGDVVEKSLEGPLAPSTDEPSQKTGDLVEILNGEKVKFDDAGLSLILQNGLETLMRME
 NALTDVILCVDIQEFSCHRVVLAAASNYFRAMFCNDLKEKEYEKRIIIGVDAETMHTLL
 DYTYSKALITKQNVQRVLEAANLFQFLRMVDACASFLTEALNPENCVGILRLADTHS
 LDSLKKQVQSYIIQNFVQILNSEEFLDLPVDTLHHILKSDDLIVTEEAQVFETVMSWV
 RHKPSERLCLLPYVLENVRLPLLDWPWFVETVEADPLIRQCPEVFPLLQEARMYHLS
 GNEIISERTKPRMHEFQSEVFMIIIGGCTKDERFVAEVTCLDPLRRSRLEVAKLPLTEH

 Tel: 1-631-559-9269 1-516-512-3133

 Email: info@creative-biomart.com  Fax: 1-631-938-8127

 45-1 Ramsey Road, Shirley, NY 11967, USA

ELESENKKWVEFACVTLKNEVYISGGKETQHDVWKYNSSINKWIQIEYLNIGRWRHK
 MVLGGKQVYVIGGFDGLQRINNVETYDPFHNCWSEAAPLLVHVSSFAATSHKKKLY
 VIGGGPNGKLATDKTQCYPSTNKWSLKAAMPVEAKCINAVSFRDRIYVVGAMRA
 LYAYSPLEDSWCLVTQLSHERASCGIAPCNNRLYITGGRDEKNEVIATVLCWDPEAQ
 KLTEECVLPBGVSHHGSVTIRKSYTHIRRVPGAVSVTRTRPLEQKLISEEDLAANDIL
 DYKDDDDKV

Purity > 80% as determined by SDS-PAGE and Coomassie blue staining

Stability Stable for 3 months from receipt of products under proper storage and handling conditions.

Storage Store at -80 centigrade. Avoid repeated freeze-thaw cycles.

Concentration 50 µg/mL as determined by BCA

Storage Buffer 100 mM glycine, 25 mM Tris-HCl, pH 7.3.

GENE INFORMATION

Gene Name [KLHL6 kelch like family member 6 \[Homo sapiens \(human\) \]](#)

Official Symbol [KLHL6](#)

Synonyms KLHL6; kelch like family member 6; kelch-like protein 6

Gene ID [89857](#)

mRNA Refseq [NM_130446](#)

Protein Refseq [NP_569713](#)

 Tel: 1-631-559-9269 1-516-512-3133

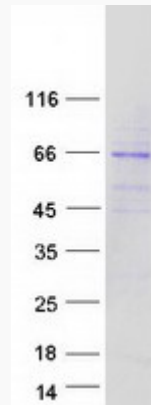
 Email: info@creative-biomart.com  Fax: 1-631-938-8127

 45-1 Ramsey Road, Shirley, NY 11967, USA

MIM 614214

UniProt ID Q8WZ60

SDS-PAGE



 Tel: 1-631-559-9269 1-516-512-3133

 Email: info@creative-biomart.com  Fax: 1-631-938-8127

 45-1 Ramsey Road, Shirley, NY 11967, USA