

# Recombinant Human KLHL8 Protein, Myc/DDK-tagged, C13 and N15-labeled

**Cat. No.** KLHL8-3397H    **Lot. No.** (See product label)

## SPECIFICATION

<b>Product Overview</b>	KLHL8 MS Standard C13 and N15-labeled recombinant protein (NP_065854) with a C-terminal MYC/DDK tag, was expressed in HEK293 cells.
<b>Species</b>	Human
<b>Source</b>	HEK293
<b>Description</b>	Substrate-specific adapter of a BCR (BTB-CUL3-RBX1) E3 ubiquitin ligase complex required for The BCR(KLHL8) ubiquitin ligase complex mediates ubiquitination and degradation of RAPSN.
<b>Molecular Mass</b>	68.9 kDa
<b>AA Sequence</b>	<p>MASDSMSSKQARNHITKGKRQQQHQQIKNRSSISDGDGEDSFIFEANEAWKDFHG  SLLRFYENGELCDVTLKVGSKLISCHKLVLACVIPYFRAMFLSEMAEAKQTLIEIRDFD  GDAIEDLVKVFYSSRLTLTVDNVQPLLYAACILQVELVARACCEYMKLHFHPSNCLAV  RAFAESHNRIDLMDMADQYACDHFTEVVECEDFVSVSPQHLHKLLSSSDLNIENEK  QVYNAAIKWLLANPQHHSKWLDETLAQVRLPLLPVDFLMGVVAKEQIVKQNLKCRDL  LDEARNYHLHLSSRAVPDFEYSIRTTTPRKHTAGVLFVGGVGGSGDPFRSIECYSIN  KNSWFFGPEMNSRRRHVGVISVEGKVYAVGGHDGNEHLGSMEMFDPLTNKWMMK  ASMNTKRRGIALASLGGPIYAIGGLDDNTCFNDVERYDIESDQWSTVAPMNTPRGG  VGSVALVNHVYAVGGNDGMASLSSVERYDPHLDKWIEVKEMGQRRRAGNGVSKLH  GCLYVVGFFDDNSRLSSVERYDPRSNKWDYVAALTTTPRGGVGIATVMGKIFAVGG</p>

 Tel: 1-631-559-9269    1-516-512-3133

 Email: [info@creative-biomart.com](mailto:info@creative-biomart.com)     Fax: 1-631-938-8127

 45-1 Ramsey Road, Shirley, NY 11967, USA

HNGNAYLNTVEAFDPVLNRWELVGSVSHCRAGAGVAVCSCLTSQIRDVGHGSNNV  
VDCMTRTRPLEQKLISEEDLAANDILDYKDDDDKV

**Purity** > 80% as determined by SDS-PAGE and Coomassie blue staining

**Stability** Stable for 3 months from receipt of products under proper storage and handling conditions.

**Storage** Store at -80 centigrade. Avoid repeated freeze-thaw cycles.

**Concentration** 50 µg/mL as determined by BCA

**Storage Buffer** 100 mM glycine, 25 mM Tris-HCl, pH 7.3.

## GENE INFORMATION

**Gene Name** [KLHL8 kelch like family member 8 \[ Homo sapiens \(human\) \]](#)

**Official Symbol** [KLHL8](#)

**Synonyms** KLHL8; kelch-like 8 (Drosophila); kelch-like protein 8; KIAA1378; FLJ46304;

**Gene ID** [57563](#)

**mRNA Refseq** [NM\\_020803](#)

**Protein Refseq** [NP\\_065854](#)

**MIM** [611967](#)

**UniProt ID** [Q9P2G9](#)

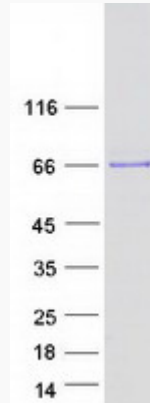
 Tel: 1-631-559-9269 1-516-512-3133

 Email: [info@creative-biomart.com](mailto:info@creative-biomart.com)  Fax: 1-631-938-8127

 45-1 Ramsey Road, Shirley, NY 11967, USA



SDS-PAGE



Tel: 1-631-559-9269 1-516-512-3133

Email: [info@creative-biomart.com](mailto:info@creative-biomart.com) Fax: 1-631-938-8127

45-1 Ramsey Road, Shirley, NY 11967, USA