

## Recombinant Human KLK1 Protein (Pro19-Ser262), C-His tagged

Cat. No. KLK1-3138H    Lot. No. (See product label)

### SPECIFICATION

<b>Product Overview</b>	Recombinant human KLK1 (Pro19-Ser262) protein fused with the C-terminal His tag was expressed in Mammalian cells.
<b>Species</b>	Human
<b>Source</b>	Mammalian Cells
<b>ProteinLength</b>	Pro19-Ser262
<b>Description</b>	<p>Kallikreins are a subgroup of serine proteases having diverse physiological functions. Growing evidence suggests that many kallikreins are implicated in carcinogenesis and some have potential as novel cancer and other disease biomarkers. This gene is one of the fifteen kallikrein subfamily members located in a cluster on chromosome 19. This protein is functionally conserved in its capacity to release the vasoactive peptide, Lys-bradykinin, from low molecular weight kininogen.</p>
<b>Molecular Mass</b>	26.84 kDa
<b>Purity</b>	>90 % as determined by SDS-PAGE.
<b>Notes</b>	For research use only.
<b>Storage</b>	Use a manual defrost freezer and avoid repeated freeze thaw cycles. Store at 2 to 8 centigrade for one week. Store at -20 to -80 centigrade for twelve months from the

 Tel: 1-631-559-9269    1-516-512-3133

 Email: [info@creative-biomart.com](mailto:info@creative-biomart.com)     Fax: 1-631-938-8127

 45-1 Ramsey Road, Shirley, NY 11967, USA

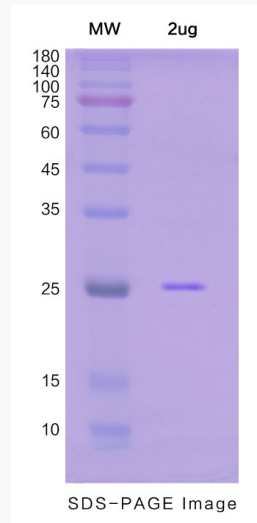
	date of receipt.
<b>Storage Buffer</b>	Supplied as solution form in PBS or lyophilized from PBS.
<b>Reconstitution</b>	Reconstitute in sterile water for a stock solution.
<b>Shipping</b>	In general, proteins are provided as lyophilized powder/frozen liquid. They are shipped out with dry ice/blue ice unless customers require otherwise.
<b>GENE INFORMATION</b>	
<b>Gene Name</b>	KLK1 kallikrein 1 [ Homo sapiens (human) ]
<b>Official Symbol</b>	KLK1
<b>Synonyms</b>	KLK1; kallikrein 1; kallikrein 1, renal/pancreas/salivary; kallikrein-1; Klk6; tissue kallikrein; glandular kallikrein 1; kallikrein serine protease 1; kidney/pancreas/salivary gland kallikrein; hK1; KLKR;
<b>Gene ID</b>	3816
<b>mRNA Refseq</b>	NM_002257
<b>Protein Refseq</b>	NP_002248
<b>MIM</b>	147910
<b>UniProt ID</b>	P06870

 Tel: 1-631-559-9269 1-516-512-3133

 Email: [info@creative-biomart.com](mailto:info@creative-biomart.com)  Fax: 1-631-938-8127

 45-1 Ramsey Road, Shirley, NY 11967, USA

**SDS-PAGE**



 Tel: 1-631-559-9269 1-516-512-3133

 Email: [info@creative-biomart.com](mailto:info@creative-biomart.com)  Fax: 1-631-938-8127

 45-1 Ramsey Road, Shirley, NY 11967, USA