

Recombinant Human KLK1 Protein (Ile25-Asn261), N-His tagged

Cat. No. KLK1-4349H **Lot. No.** (See product label)

SPECIFICATION

Product Overview	Recombinant human KLK1 (Ile25-Asn261) fused with the N-His tag was expressed in E. coli.
Species	Human
Source	E.coli
ProteinLength	Ile25-Asn261
Form	Lyophilized powder/frozen liquid
Molecular Mass	28.63 kDa
Purity	>90% as determined by SDS-PAGE.
Notes	For research use only.
Storage	Use a manual defrost freezer and avoid repeated freeze thaw cycles. Store at 2 to 8 centigrade for one week. Store at -20 to -80 centigrade for twelve months from the date of receipt.
Storage Buffer	0.01M PBS, pH 7.4, 0.02% NLS
Reconstitution	Reconstitute in sterile water for a stock solution.

 Tel: 1-631-559-9269 1-516-512-3133

 Email: info@creative-biomart.com  Fax: 1-631-938-8127

 45-1 Ramsey Road, Shirley, NY 11967, USA

Shipping They are shipped out with dry ice/blue ice unless customers require otherwise.

GENE INFORMATION

Gene Name [KLK1 kallikrein 1 \[Homo sapiens \(human\) \]](#)

Official Symbol [KLK1](#)

Synonyms KLK1; kallikrein 1; kallikrein 1, renal/pancreas/salivary; kallikrein-1; Klk6; tissue kallikrein; glandular kallikrein 1; kallikrein serine protease 1; kidney/pancreas/salivary gland kallikrein; hK1; KLKR;

Gene ID [3816](#)

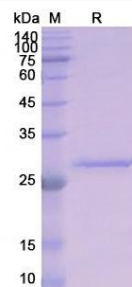
mRNA Refseq [NM_002257](#)


Protein Refseq [NP_002248](#)

MIM [147910](#)

UniProt ID [P06870](#)

SDS-PAGE



 Tel: 1-631-559-9269 1-516-512-3133

 Email: info@creative-biomart.com  Fax: 1-631-938-8127

 45-1 Ramsey Road, Shirley, NY 11967, USA