

Recombinant Human KLK10 Protein (Ala31-Asn276), C-His tagged

Cat. No. KLK10-2683H **Lot. No.** (See product label)

SPECIFICATION

Product Overview	Recombinant human KLK10 (Ala31-Asn276) protein fused with the C-terminal His tag was expressed in Mammalian cells.
Species	Human
Source	Mammalian Cells
ProteinLength	Ala31-Asn276
Molecular Mass	27.06 kDa
Purity	>90 % as determined by SDS-PAGE.
Notes	For research use only.
Storage	Use a manual defrost freezer and avoid repeated freeze thaw cycles. Store at 2 to 8 centigrade for one week. Store at -20 to -80 centigrade for twelve months from the date of receipt.
Storage Buffer	Supplied as solution form in PBS or lyophilized from PBS.
Reconstitution	Reconstitute in sterile water for a stock solution.
Shipping	In general, proteins are provided as lyophilized powder/frozen liquid. They are

 Tel: 1-631-559-9269 1-516-512-3133

 Email: info@creative-biomart.com  Fax: 1-631-938-8127

 45-1 Ramsey Road, Shirley, NY 11967, USA

shipped out with dry ice/blue ice unless customers require otherwise.

GENE INFORMATION

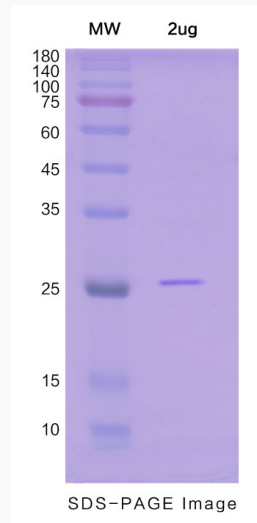
Gene Name	KLK10 kallikrein-related peptidase 10 [Homo sapiens (human)]
Official Symbol	KLK10
Synonyms	KLK10; kallikrein-related peptidase 10; kallikrein 10, PRSSL1; kallikrein-10; NES1; kallikrein 10; protease serine-like 1; protease, serine-like, 1; normal epithelial cell-specific 1; breast normal epithelial cell associated serine protease; PRSSL1;
Gene ID	5655
mRNA Refseq	NM_001077500
Protein Refseq	NP_001070968
MIM	602673
UniProt ID	O43240

 Tel: 1-631-559-9269 1-516-512-3133

 Email: info@creative-biomart.com  Fax: 1-631-938-8127

 45-1 Ramsey Road, Shirley, NY 11967, USA

SDS-PAGE



 Tel: 1-631-559-9269 1-516-512-3133

 Email: info@creative-biomart.com  Fax: 1-631-938-8127

 45-1 Ramsey Road, Shirley, NY 11967, USA