

Recombinant Human KLK10 Protein (Leu35-Asn276), N-His tagged

Cat. No. KLK10-5023H Lot. No. (See product label)

SPECIFICATION

Product Overview	Recombinant human KLK10 (Leu35-Asn276) fused with the N-His tag was expressed in E. coli.
Species	Human
Source	E.coli
ProteinLength	Leu35-Asn276
Form	Lyophilized powder/frozen liquid
Molecular Mass	28.95 kDa
Purity	>90% as determined by SDS-PAGE.
Notes	For research use only.
Storage	Use a manual defrost freezer and avoid repeated freeze thaw cycles. Store at 2 to 8 centigrade for one week. Store at -20 to -80 centigrade for twelve months from the date of receipt.
Storage Buffer	0.01M PBS, pH 7.4, 0.02% NLS
Reconstitution	Reconstitute in sterile water for a stock solution.

 Tel: 1-631-559-9269 1-516-512-3133

 Email: info@creative-biomart.com  Fax: 1-631-938-8127

 45-1 Ramsey Road, Shirley, NY 11967, USA

Shipping

They are shipped out with dry ice/blue ice unless customers require otherwise.

GENE INFORMATION
Gene Name

KLK10 kallikrein-related peptidase 10 [Homo sapiens (human)]

Official Symbol

KLK10

Synonyms

KLK10; kallikrein-related peptidase 10; kallikrein 10, PRSSL1; kallikrein-10; NES1; kallikrein 10; protease serine-like 1; protease, serine-like, 1; normal epithelial cell-specific 1; breast normal epithelial cell associated serine protease; PRSSL1;

Gene ID

5655

mRNA Refseq

NM_001077500

Protein Refseq

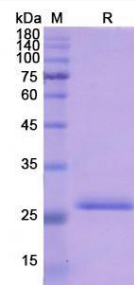
NP_001070968

MIM

602673

UniProt ID

O43240

SDS-PAGE


 Tel: 1-631-559-9269 1-516-512-3133

 Email: info@creative-biomart.com  Fax: 1-631-938-8127

 45-1 Ramsey Road, Shirley, NY 11967, USA