

## Active Recombinant Human KLK11 protein, His-tagged

Cat. No. KLK11-2672H Lot. No. (See product label)

### SPECIFICATION

<b>Product Overview</b>	Active Recombinant Human Kallikrein-11/KLK11 Protein is produced by HEK293 cells expression system. The target protein is expressed with sequence (Met1-Asn250) of human KLK11/Kallikrein-11 (Accession #NP_006844.1) fused with a 6xHis tag at the C-terminus.
<b>Species</b>	Human
<b>Source</b>	HEK293
<b>ProteinLength</b>	Met1-Asn250
<b>Form</b>	Lyophilized from a 0.22 µm filtered solution of PBS, pH 7.4.
<b>Bio-activity</b>	Measured by its ability to cleave a colorimetric peptide substrate, N-carbobenzyloxy-L-lys-ThioBenzyl ester (Z-Lys-SBzl), in the presence of 5,5'Dithio-bis (2-nitrobenzoic acid) (DTNB). The specific activity is >141.40 pmol/min/µg.
<b>Molecular Mass</b>	40 kDa
<b>Endotoxin</b>	< 0.1 EU/µg of the protein by LAL method.
<b>Purity</b>	> 92% by SDS-PAGE.
<b>Storage</b>	Store the lyophilized protein at -20°C to -80 °C for long term. After reconstitution, the protein solution is stable at -20 °C for 3 months, at 2-8 °C for

 Tel: 1-631-559-9269 1-516-512-3133

 Email: [info@creative-biomart.com](mailto:info@creative-biomart.com)  Fax: 1-631-938-8127

 45-1 Ramsey Road, Shirley, NY 11967, USA

up to 1 week.

**Reconstitution** Reconstitute to a concentration of 0.1-0.5 mg/mL in sterile distilled water.

## GENE INFORMATION

**Gene Name** [KLK11 kallikrein-related peptidase 11 \[ Homo sapiens \]](#)

**Official Symbol** [KLK11](#)

**Synonyms** KLK11; kallikrein-related peptidase 11; kallikrein 11 , PRSS20; kallikrein-11; TLSP; hK11; hippostasin; kallikrein 11; serine protease 20; trypsin-like protease; PRSS20; MGC33060;

**Gene ID** [11012](#)

**mRNA Refseq** [NM\\_001136032](#)

**Protein Refseq** [NP\\_001129504](#)

**MIM** [604434](#)

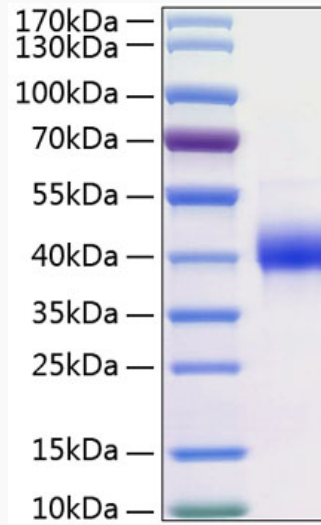
**UniProt ID** [Q9UBX7](#)

 Tel: 1-631-559-9269 1-516-512-3133

 Email: [info@creative-biomart.com](mailto:info@creative-biomart.com)  Fax: 1-631-938-8127

 45-1 Ramsey Road, Shirley, NY 11967, USA

SDS-PAGE



 Tel: 1-631-559-9269 1-516-512-3133

 Email: [info@creative-biomart.com](mailto:info@creative-biomart.com)  Fax: 1-631-938-8127

 45-1 Ramsey Road, Shirley, NY 11967, USA