

Active Recombinant Human KLK11 protein, His-tagged

Cat. No. KLK11-300H Lot. No. (See product label)

SPECIFICATION

Product Overview	Active Recombinant Human KLK11 protein(NP_006844.1) (Met 1-Asn 250) with a C-terminal polyhistidine tag was expressed in HEK293.
Species	Human
Source	HEK293
ProteinLength	1-250 aa
Form	Lyophilized from sterile PBS, pH 7.4.
Bio-activity	Measured by its ability to cleave a colorimetric peptide substrate D-Val-Leu-Lys-ThioBenzyl ester (VLK-SBzl), in the presence of 5,5'Dithio-bis (2-nitrobenzoic acid) (DTNB) (Edwards, K.M. et al.,1999, J. Biol. Chem. 274: 30468). The specific activity is >200 pmoles/min/μg.
Molecular Mass	The secreted recombinant human KLK11 comprises 243 amino acids with a predicted molecular mass of 27 kDa. As a result of glycosylation, rhKLK11 migrates as an approximately 40 kDa band in SDS-PAGE under reducing conditions.
Endotoxin	< 1.0 EU per μg of the protein as determined by the LAL method.
Purity	> 95 % as determined by SDS-PAGE
Storage	Store it under sterile conditions at -20°C to -80°C upon receiving. Recommend to

 Tel: 1-631-559-9269 1-516-512-3133

 Email: info@creative-biomart.com  Fax: 1-631-938-8127

 45-1 Ramsey Road, Shirley, NY 11967, USA

aliquot the protein into smaller quantities for optimal storage. Avoid repeated freeze-thaw cycles.

Reconstitution

It is recommended that sterile water be added to the vial to prepare a stock solution of 0.2 ug/ul. Centrifuge the vial at 4°C before opening to recover the entire contents.

GENE INFORMATION

Gene Name [KLK11 kallikrein-related peptidase 11 \[Homo sapiens \]](#)

Official Symbol [KLK11](#)

Synonyms KLK11; kallikrein-related peptidase 11; kallikrein 11 , PRSS20; kallikrein-11; TLSP; hK11; hippostasin; kallikrein 11; serine protease 20; trypsin-like protease; PRSS20; MGC33060;

Gene ID [11012](#)

mRNA Refseq [NM_001136032](#)

Protein Refseq [NP_001129504](#)

MIM [604434](#)

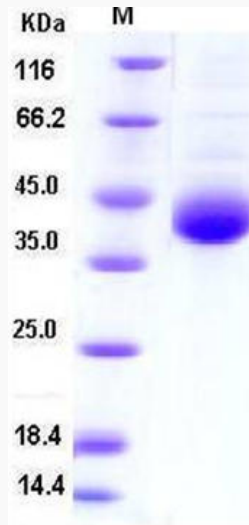
UniProt ID [Q9UBX7](#)

 Tel: 1-631-559-9269 1-516-512-3133

 Email: info@creative-biomart.com  Fax: 1-631-938-8127

 45-1 Ramsey Road, Shirley, NY 11967, USA

SDS-PAGE



 Tel: 1-631-559-9269 1-516-512-3133

 Email: info@creative-biomart.com  Fax: 1-631-938-8127

 45-1 Ramsey Road, Shirley, NY 11967, USA