

Recombinant Human KLK11 Protein, Myc/DDK-tagged, C13 and N15-labeled

Cat. No. KLK11-4874H Lot. No. (See product label)

SPECIFICATION

Product Overview

KLK11 MS Standard C13 and N15-labeled recombinant protein (NP_001129504) with a C-terminal MYC/DDK tag, was expressed in HEK293 cells.

Species

Human

Source

HEK293

Description

Kallikreins are a subgroup of serine proteases having diverse physiological functions. Growing evidence suggests that many kallikreins are implicated in carcinogenesis and some have potential as novel cancer and other disease biomarkers. This gene is one of the fifteen kallikrein subfamily members located in a cluster on chromosome 19. Alternate splicing and the use of alternate promoters results in multiple transcript variants encoding distinct isoforms which are differentially expressed.

Molecular Mass

27.5 kDa

AA Sequence

MRILQLILLALATGLVGGETRIIKGFECKPHSQPWQAALFEKTRLLCGATLIAPRWLLT
AAHCLKPRYIVHLGQHNLQKEEGCEQTRTATESFPHPGFNNSLPNKDHRNDIMLVK
MASPVSITWAVRPLTLSSRCVTAGTSC LISGWGSTSSPQLRLPHTLRCANITIIEHQK
CENAYPGNITDTMVCASVQEGGKDSCQGDSSGGLVCNQS LQGIISWGQDPCAITRK
PGVYTKVCKYVDWIQETMKNNTRTRPLEQKLISEEDLAANDILDYKDDDDKV

Purity

> 80% as determined by SDS-PAGE and Coomassie blue staining

 Tel: 1-631-559-9269 1-516-512-3133

 Email: info@creative-biomart.com  Fax: 1-631-938-8127

 45-1 Ramsey Road, Shirley, NY 11967, USA

Stability	Stable for 3 months from receipt of products under proper storage and handling conditions.
Storage	Store at -80 centigrade. Avoid repeated freeze-thaw cycles.
Concentration	50 µg/mL as determined by BCA
Storage Buffer	100 mM glycine, 25 mM Tris-HCl, pH 7.3.

GENE INFORMATION

Gene Name	KLK11 kallikrein-related peptidase 11 [Homo sapiens (human)]
Official Symbol	KLK11
Synonyms	KLK11; kallikrein-related peptidase 11; kallikrein 11, PRSS20; kallikrein-11; TLSP; hK11; hippostasin; kallikrein 11; serine protease 20; trypsin-like protease; PRSS20; MGC33060;
Gene ID	11012
mRNA Refseq	NM_001136032
Protein Refseq	NP_001129504
MIM	604434
UniProt ID	Q9UBX7

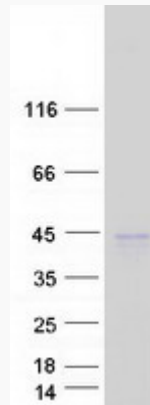
 Tel: 1-631-559-9269 1-516-512-3133

 Email: info@creative-biomart.com  Fax: 1-631-938-8127

 45-1 Ramsey Road, Shirley, NY 11967, USA



SDS-PAGE



Tel: 1-631-559-9269 1-516-512-3133

Email: info@creative-biomart.com Fax: 1-631-938-8127

45-1 Ramsey Road, Shirley, NY 11967, USA