

Recombinant Human KLK13 protein

Cat. No. KLK13-301H **Lot. No.** (See product label)

SPECIFICATION

Product Overview	Recombinant Human KLK13 protein(NP_056411.1) (Met 1-Ile 262) was expressed in HEK293, obtained after cleavage of the C-terminal human IgG1 Fc region from the purified chimera.
Species	Human
Source	HEK293
ProteinLength	1-262 aa
Form	Lyophilized from sterile 100mM Glycine, 10mM NaCl, 50mM Tris, pH 7.5.
Molecular Mass	The recombinant human KLK13 consists of 251 amino acids and predicts a molecular mass of 27.6 kDa. As a result of glycosylation, rhKLK13 migrates as an approximately 37 kDa band in SDS-PAGE.
Endotoxin	< 1 EU/g as determined by LAL test.
Purity	> 95 % as determined by SDS-PAGE
Storage	Store it under sterile conditions at -20°C to -80°C upon receiving. Recommend to aliquot the protein into smaller quantities for optimal storage. Avoid repeated freeze-thaw cycles.
Reconstitution	It is recommended that sterile water be added to the vial to prepare a stock solution of

 Tel: 1-631-559-9269 1-516-512-3133

 Email: info@creative-biomart.com  Fax: 1-631-938-8127

 45-1 Ramsey Road, Shirley, NY 11967, USA

0.2 ug/ul. Centrifuge the vial at 4°C before opening to recover the entire contents.

GENE INFORMATION

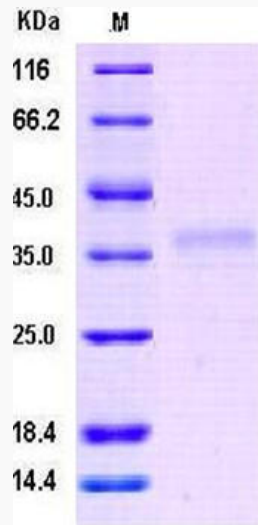
Gene Name	KLK13 kallikrein-related peptidase 13 [Homo sapiens]
Official Symbol	KLK13
Synonyms	KLK13; kallikrein-related peptidase 13; kallikrein 13; kallikrein-13; KLK L4; kallikrein-like gene 4; kallikrein-like protein 4; KLKL4; KLK-L4; DKFZp586J1923;
Gene ID	26085
mRNA Refseq	NM_015596
Protein Refseq	NP_056411
MIM	605505
UniProt ID	Q9UKR3

 Tel: 1-631-559-9269 1-516-512-3133

 Email: info@creative-biomart.com  Fax: 1-631-938-8127

 45-1 Ramsey Road, Shirley, NY 11967, USA

SDS-PAGE



 Tel: 1-631-559-9269 1-516-512-3133

 Email: info@creative-biomart.com  Fax: 1-631-938-8127

 45-1 Ramsey Road, Shirley, NY 11967, USA