

## Recombinant Human KLK13 Protein (Gly17-Ile262), C-His tagged

Cat. No. KLK13-3524H Lot. No. (See product label)

### SPECIFICATION

<b>Product Overview</b>	Recombinant human KLK13 (Gly17-Ile262) protein fused with the C-terminal His tag was expressed in Mammalian cells.
<b>Species</b>	Human
<b>Source</b>	Mammalian Cells
<b>ProteinLength</b>	Gly17-Ile262
<b>Molecular Mass</b>	27.06 kDa
<b>Purity</b>	>90 % as determined by SDS-PAGE.
<b>Notes</b>	For research use only.
<b>Storage</b>	Use a manual defrost freezer and avoid repeated freeze thaw cycles. Store at 2 to 8 centigrade for one week. Store at -20 to -80 centigrade for twelve months from the date of receipt.
<b>Storage Buffer</b>	Supplied as solution form in PBS or lyophilized from PBS.
<b>Reconstitution</b>	Reconstitute in sterile water for a stock solution.
<b>Shipping</b>	In general, proteins are provided as lyophilized powder/frozen liquid. They are

 Tel: 1-631-559-9269 1-516-512-3133

 Email: [info@creative-biomart.com](mailto:info@creative-biomart.com)  Fax: 1-631-938-8127

 45-1 Ramsey Road, Shirley, NY 11967, USA

shipped out with dry ice/blue ice unless customers require otherwise.

## GENE INFORMATION

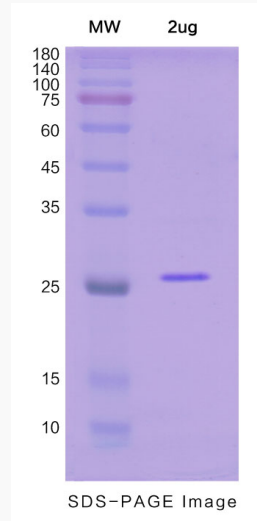
<b>Gene Name</b>	KLK13 kallikrein-related peptidase 13 [ Homo sapiens (human) ]
<b>Official Symbol</b>	KLK13
<b>Synonyms</b>	KLK13; kallikrein-related peptidase 13; kallikrein 13; kallikrein-13; KLK L4; kallikrein-like gene 4; kallikrein-like protein 4; KLKL4; KLK-L4; DKFZp586J1923;
<b>Gene ID</b>	26085
<b>mRNA Refseq</b>	NM_015596
<b>Protein Refseq</b>	NP_056411
<b>MIM</b>	605505
<b>UniProt ID</b>	Q9UKR3

 Tel: 1-631-559-9269 1-516-512-3133

 Email: [info@creative-biomart.com](mailto:info@creative-biomart.com)  Fax: 1-631-938-8127

 45-1 Ramsey Road, Shirley, NY 11967, USA

**SDS-PAGE**



 Tel: 1-631-559-9269 1-516-512-3133

 Email: [info@creative-biomart.com](mailto:info@creative-biomart.com)  Fax: 1-631-938-8127

 45-1 Ramsey Road, Shirley, NY 11967, USA