

Recombinant Mouse KLK14 Protein (24-250 aa), His-tagged

Cat. No. KLK14-2159M Lot. No. (See product label)

SPECIFICATION

Product Overview	Recombinant Mouse KLK14 Protein (24-250 aa) is produced by Yeast expression system. This protein is fused with a 6xHis tag at the N-terminal. Research Area: Tags & Cell Markers. Protein Description: Full Length of Mature Protein.
Species	Mouse
Source	Yeast
ProteinLength	24-250 aa
Description	<p>Serine-type endopeptidase with a dual trypsin-like and chymotrypsin-like substrate specificity. May activate/inactivate the proteinase-activated receptors F2R, F2RL1 and F2RL3 and other kallikreins including KLK1, KLK3, KLK5 and KLK11. May function in seminal clot liquefaction through direct cleavage of the semenogelin SEMG1 and SEMG2 and activation of KLK3. May function through desmoglein DSG1 cleavage in epidermal desquamation a process by which the most superficial corneocytes are shed from the skin surface. May be involved in several aspects of tumor progression including growth, invasion and angiogenesis Inhibited by SERPINA1, SERPINC1, SERPINE1, SERPINF2, aprotinin, soybean, trypsin inhibitor and leupeptin. Inhibited by serine protease inhibitor SPINK5. Has an autoproteolytic activity which may have a regulatory effect. Activated by citrate and inhibited by zinc and to a lower extent by manganese.</p>
Form	Tris-based buffer,50% glycerol

 Tel: 1-631-559-9269 1-516-512-3133

 Email: info@creative-biomart.com  Fax: 1-631-938-8127

 45-1 Ramsey Road, Shirley, NY 11967, USA

Molecular Mass	26.5 kDa
AA Sequence	IIGGYRCVRNSQPWQVALQAGPGHRFLCGGVLLSDQWVITAAHCARPILHVALGKH NIRRWEATQQVVRVARQVPHQPYPQAHDNDLMLLKLQKKVRLGRAVKTISVASSC ASPGTPCRVSGWGTIASPIARYPTALQCVNVNIMSEQACHRAYPGIITSGMVCAGVP EGGKDSCQGDSSGGLVCGGQLQGLVSWGMERCAMPYGPVYANLCNYHSWIQR TMQSN
Purity	> 90% as determined by SDS-PAGE.
Notes	Repeated freezing and thawing is not recommended. Store working aliquots at 4 centigrade for up to one week.
Storage	The shelf life is related to many factors, storage state, buffer ingredients, storage temperature and the stability of the protein itself. Generally, the shelf life of liquid form is 6 months at -20 centigrade/-80 centigrade. The shelf life of lyophilized form is 12 months at -20 centigrade/-80 centigrade.
Concentration	A hardcopy of COA will be sent along with the products. Please refer to it for detailed information.

GENE INFORMATION

Gene Name	KLK14 kallikrein related-peptidase 14 [<i>Mus musculus</i>]
Official Symbol	KLK14
Synonyms	KLK14; kallikrein-14; mGK14; kallikrein 14; GK14; MGC157618;
Gene ID	317653

 Tel: 1-631-559-9269 1-516-512-3133

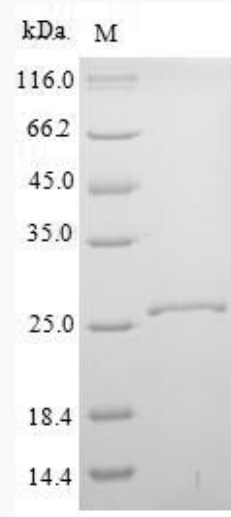
 Email: info@creative-biomart.com  Fax: 1-631-938-8127

 45-1 Ramsey Road, Shirley, NY 11967, USA

mRNA Refseq [NM_174866](#)

Protein Refseq [NP_777355](#)

UniProt ID [Q8CGR5](#)



(Tris-Glycine gel) Discontinuous SDS-PAGE (reduced) with 5% enrichment gel and 15% separation gel.

 Tel: 1-631-559-9269 1-516-512-3133

 Email: info@creative-biomart.com  Fax: 1-631-938-8127

 45-1 Ramsey Road, Shirley, NY 11967, USA