

Recombinant Mouse KLK14 Protein (24-250 aa), His-SUMO-tagged

Cat. No. KLK14-2193M **Lot. No.** (See product label)

SPECIFICATION

Product Overview	Recombinant Mouse KLK14 Protein (24-250 aa) is produced by E. coli expression system. This protein is fused with a 6xHis-SUMO tag at the N-terminal. Research Area: Tags & Cell Markers. Protein Description: Full Length of Mature Protein.
Species	Mouse
Source	E.coli
ProteinLength	24-250 aa
Description	Serine-type endopeptidase with a dual trypsin-like and chymotrypsin-like substrate specificity. May activate/inactivate the proteinase-activated receptors F2R, F2RL1 and F2RL3 and other kallikreins including KLK1, KLK3, KLK5 and KLK11. May function in seminal clot liquefaction through direct cleavage of the semenogelin SEMG1 and SEMG2 and activation of KLK3. May function through desmoglein DSG1 cleavage in epidermal desquamation a process by which the most superficial corneocytes are shed from the skin surface. May be involved in several aspects of tumor progression including growth, invasion and angiogenesis.
Form	Tris-based buffer,50% glycerol
Molecular Mass	40.5 kDa
AA Sequence	IIGGYRCVRNSQPWQVALQAGPGHRFLCGGVLLSDQWVITAAHCARPILHVALGKH

 Tel: 1-631-559-9269 1-516-512-3133

 Email: info@creative-biomart.com  Fax: 1-631-938-8127

 45-1 Ramsey Road, Shirley, NY 11967, USA

NIRRWEATQQVVRVARQVPHQYQPQAHDNDLMLLKLQKKVRLGRAVKTISVASSC
 ASPGTPCRVSGWGTIASPIARYPTALQCVNVNIMSEQACHRAYPGIITSGMVCAGVP
 EGGKDSCQGDSSGGLVCGGQLQGLVSWGMECAMPGYPGVYANLCNYHSWIQR
 TMQSN

Purity > 90% as determined by SDS-PAGE.

Notes Repeated freezing and thawing is not recommended. Store working aliquots at 4 centigrade for up to one week.

Storage The shelf life is related to many factors, storage state, buffer ingredients, storage temperature and the stability of the protein itself. Generally, the shelf life of liquid form is 6 months at -20 centigrade/-80 centigrade. The shelf life of lyophilized form is 12 months at -20 centigrade/-80 centigrade.

Concentration A hardcopy of COA will be sent along with the products. Please refer to it for detailed information.

GENE INFORMATION

Gene Name [Klk14 kallikrein related-peptidase 14 \[Mus musculus \]](#)

Official Symbol [KLK14](#)

Synonyms [KLK14](#); [kallikrein-14](#); [mGK14](#); [kallikrein 14](#); [glandular kallikrein KLK14](#); [GK14](#); [MGC157618](#);

Gene ID [317653](#)

mRNA Refseq [NM_174866](#)

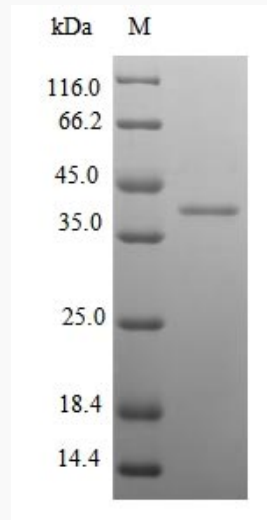
 Tel: 1-631-559-9269 1-516-512-3133

 Email: info@creative-biomart.com  Fax: 1-631-938-8127

 45-1 Ramsey Road, Shirley, NY 11967, USA

Protein Refseq NP_777355

UniProt ID Q8CGR5



(Tris-Glycine gel) Discontinuous SDS-PAGE (reduced) with 5% enrichment gel and 15% separation gel.

Tel: 1-631-559-9269 1-516-512-3133

Email: info@creative-biomart.com Fax: 1-631-938-8127

45-1 Ramsey Road, Shirley, NY 11967, USA