

Recombinant Human KLK14 protein, His & GST-tagged

Cat. No. KLK14-8001H Lot. No. (See product label)

SPECIFICATION

Product Overview	Recombinant Human KLK14 aa. (Glu36~Lys267 (Accession # Q9P0G3)) fused with N-terminal His & GST tag was produced in E. coli cells.
Species	Human
Source	E.coli
ProteinLength	Glu36~Lys267
Description	This gene encodes a member of the kallikrein subfamily of serine proteases that have diverse physiological functions such as regulation of blood pressure and desquamation. The altered expression of this gene is implicated in the progression of different cancers including breast and prostate tumors. The encoded protein is a precursor that is proteolytically processed to generate the functional enzyme. This gene is one of the fifteen kallikrein subfamily members located in a cluster on chromosome 19. Alternative splicing results in multiple transcript variants.
Form	Freeze-dried powder
Molecular Mass	Predicted Molecular Mass: 55.4kDa
Endotoxin	<1.0EU per 1ug (determined by the LAL method)
Purity	>90%

 Tel: 1-631-559-9269 1-516-512-3133

 Email: info@creative-biomart.com  Fax: 1-631-938-8127

 45-1 Ramsey Road, Shirley, NY 11967, USA

Characteristic	The isoelectric point is 9.3.
Applications	SDS-PAGE; WB; ELISA; IP
Stability	The thermal stability is described by the loss rate of the target protein. The loss rate was determined by accelerated thermal degradation test, that is, incubate the protein at 37°C for 48h, and no obvious degradation and precipitation were observed. (Referring from China Biological Products Standard, which was calculated by the Arrhenius equation.) The loss of this protein is less than 5% within the expiration date under appropriate storage condition.
Storage	Avoid repeated freeze/thaw cycles. Store at 2-8°C for one month. Aliquot and store at -80°C for 12 months.
Storage Buffer	Supplied as lyophilized form in PBS, pH7.4, containing 5% trehalose, 0.01% sarcosyl.
Reconstitution	Reconstitute in sterile PBS, pH7.2-pH7.4.

GENE INFORMATION

Gene Name	KLK14 kallikrein related peptidase 14 [Homo sapiens (human)]
Official Symbol	KLK14
Synonyms	KLK14; kallikrein related peptidase 14; KLK-L6; kallikrein-14; kallikrein-like protein 6
Gene ID	43847
mRNA Refseq	NM_001311182.1
Protein Refseq	NP_001298111.1

 Tel: 1-631-559-9269 1-516-512-3133

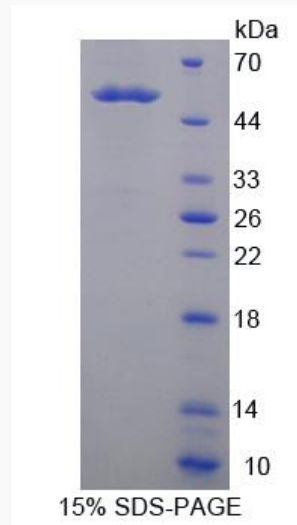
 Email: info@creative-biomart.com  Fax: 1-631-938-8127

 45-1 Ramsey Road, Shirley, NY 11967, USA

UniProt ID

Q9P0G3

SDS-PAGE



 Tel: 1-631-559-9269 1-516-512-3133

 Email: info@creative-biomart.com  Fax: 1-631-938-8127

 45-1 Ramsey Road, Shirley, NY 11967, USA