

Recombinant Mouse KLK1B22 protein, His-tagged

Cat. No. KLK1B22-373M Lot. No. (See product label)

SPECIFICATION

Product Overview	Recombinant Mouse KLK1B22 protein (Ala18-Pro259), fused to His tag at C-terminus, was expressed in human 293 cells (HEK293).
Species	Mouse
Source	HEK293
ProteinLength	242
Description	Kallikrein 1-related peptidase b22 (Klk1b22) is also known as Beta-NGF-endopeptidase, Epidermal growth factor-binding protein type A (EGF-BP A), Glandular kallikrein K22 (mGK-22), Nerve growth factor beta chain endopeptidase, Tissue kallikrein 22 (KLK22), which belongs to the peptidase S1 family and Kallikrein subfamily. Klk1b22 contains one peptidase S1 domain. Klk1b22 preferential cleavage of Arg- -Xaa bonds in small molecule substrates and highly selective action to release kallidin (lysyl-bradykinin) from kininogen involves hydrolysis of Met- -Xaa or Leu- -Xaa.
Form	Lyophilized from 0.22 um filtered solution in 50 mM Tris, 150 mM NaCl, pH7.5 with 0.05% CHAPS, 10% trehalose.
Molecular Mass	The protein has a calculated MW of 27.3 kDa. The protein migrates as 32-34 kDa under reducing (R) condition (SDS-PAGE) due to glycosylation.
Endotoxin	Less than 1.0 EU per ug by the LAL method.

 Tel: 1-631-559-9269 1-516-512-3133

 Email: info@creative-biomart.com  Fax: 1-631-938-8127

 45-1 Ramsey Road, Shirley, NY 11967, USA

Purity	>95% as determined by SDS-PAGE.
Storage	<p>For long term storage, the product should be stored at lyophilized state at -20 centigrade or lower.</p> <p>Please avoid repeated freeze-thaw cycles.</p> <p>This product is stable after storage at:</p> <p>-20 centigrade to -70 centigrade for 12 months in lyophilized state; -70 centigrade for 3 months under sterile conditions after reconstitution.</p>
Reconstitution	It is recommended that sterile water be added to the vial to prepare a stock solution of 0.2 ug/ul. Centrifuge the vial at 4°C before opening to recover the entire contents.

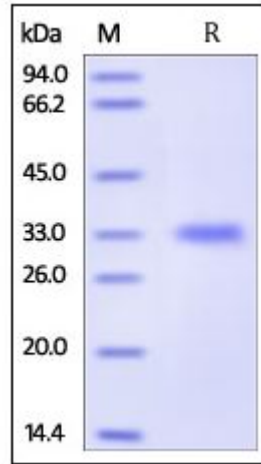
GENE INFORMATION

Gene Name	Klk1b22
Official Symbol	Klk1b22
Synonyms	Klk22; Egfbp1; mGk-22; Egfbp-1; EGF-BP A
Gene ID	13646
mRNA Refseq	NM_010114.2
Protein Refseq	NP_034244.1
UniProt ID	Q540N3

 Tel: 1-631-559-9269 1-516-512-3133

 Email: info@creative-biomart.com  Fax: 1-631-938-8127

 45-1 Ramsey Road, Shirley, NY 11967, USA

**SDS-PAGE of
KLK1B22-373M**

Mouse Kallikrein 22, His Tag on SDS-PAGE under reducing (R) condition. The gel was stained overnight with Coomassie Blue. The purity of the protein is greater than 95%.

 Tel: 1-631-559-9269 1-516-512-3133

 Email: info@creative-biomart.com  Fax: 1-631-938-8127

 45-1 Ramsey Road, Shirley, NY 11967, USA