

Recombinant Mouse KLK1B22 Protein (25-259 aa), His-SUMO-tagged

Cat. No. KLK1B22-896M **Lot. No.** (See product label)

SPECIFICATION

Product Overview	Recombinant Mouse KLK1B22 Protein (25-259 aa) is produced by E. coli expression system. This protein is fused with a 6xHis-SUMO tag at the N-terminal. Protein Description: Full Length of Mature Protein.
Species	Mouse
Source	E.coli
ProteinLength	25-259 aa
Description	Glandular kallikreins cleave Met-Lys and Arg-Ser bonds in kininogen to release Lys-bradykinin.
Form	Tris-based buffer, 50% glycerol
Molecular Mass	41.8 kDa
AA Sequence	ILGGFKCEKNSQPWQVAVYYLDEYLCGGVLLDRNWVLTAAHCYEDKYNIWLGKNKL FQDEPSAQHRLVSKSFPHPDFNMSLLQSVPTGADLSNDLMLLRLSKPADITDVVKPI DLPTTEPKLGSTCLASGWGSINQLIQNPNDLQCVSIKLPNEVCVKAHILKVTDVML CAGEMNGGKDTCKGDSGGPLICDGVLQGITSWGSTPCGEPNAPAIYTKLIKFTSWIK DTMAKNP
Purity	> 90% as determined by SDS-PAGE.

 Tel: 1-631-559-9269 1-516-512-3133

 Email: info@creative-biomart.com  Fax: 1-631-938-8127

 45-1 Ramsey Road, Shirley, NY 11967, USA

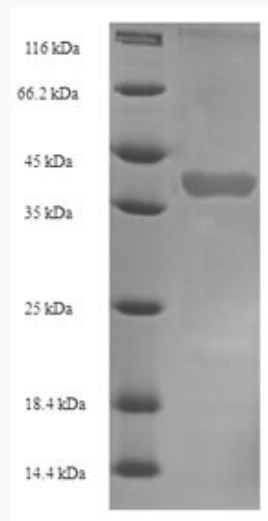
Notes Repeated freezing and thawing is not recommended. Store working aliquots at 4 centigrade for up to one week.

Storage The shelf life is related to many factors, storage state, buffer ingredients, storage temperature and the stability of the protein itself. Generally, the shelf life of liquid form is 6 months at -20 centigrade/-80 centigrade. The shelf life of lyophilized form is 12 months at -20 centigrade/-80 centigrade.

Concentration A hardcopy of COA with concentration instruction is sent along with the products.

GENE INFORMATION

UniProt ID [P15948](#)



(Tris-Glycine gel) Discontinuous SDS-PAGE (reduced) with 5% enrichment gel and 15% separation gel.

 Tel: 1-631-559-9269 1-516-512-3133

 Email: info@creative-biomart.com  Fax: 1-631-938-8127

 45-1 Ramsey Road, Shirley, NY 11967, USA