

# Recombinant Full Length Human KLK2 Protein, C-Flag-tagged

**Cat. No.** KLK2-239HFL    **Lot. No.** (See product label)

## SPECIFICATION

<b>Product Overview</b>	Recombinant Full Length Human KLK2 Protein, fused to Flag-tag at C-terminus, was expressed in Mammalian cells.
<b>Species</b>	Human
<b>Source</b>	Mammalian Cells
<b>Description</b>	This gene encodes a member of the grandular kallikrein protein family. Kallikreins are a subgroup of serine proteases that are clustered on chromosome 19. Members of this family are involved in a diverse array of biological functions. The protein encoded by this gene is a highly active trypsin-like serine protease that selectively cleaves at arginine residues. This protein is primarily expressed in prostatic tissue and is responsible for cleaving pro-prostate-specific antigen into its enzymatically active form. This gene is highly expressed in prostate tumor cells and may be a prognostic maker for prostate cancer risk. Alternate splicing results in both coding and non-coding transcript variants.
<b>Form</b>	25 mM Tris HCl, pH 7.3, 100 mM glycine, 10% glycerol.
<b>Molecular Mass</b>	28.5 kDa
<b>AA Sequence</b>	MWDLVLSIALSVGCTGAVPLIQSRIVGGWECEKHSQPWQVAVYSHGWAHCGGVLV HPQWVLTAAHCLKKN SQVWLGRHNLFEPEDTGQRVPVSHSFPHPLYNMSLLKHQ SLRPDEDSSHDLMLLRLSEPAKITDVVKVLG LPTQEPALGTTTCYASGWGSIEPEEFL RPRSLQCVSLHLLSNDMPCARAYSEKVTEFMLCAGLWTGGKDTCG

 Tel: 1-631-559-9269    1-516-512-3133

 Email: [info@creative-biomart.com](mailto:info@creative-biomart.com)     Fax: 1-631-938-8127

 45-1 Ramsey Road, Shirley, NY 11967, USA

GDSGGPLVCNGVLQGITSWGPEPCALPEKPAVYTKVVHYRKWIKDTIAANPTRTRPL  
EQKLISEEDLAANDILDYKDDDDKV

**Purity** > 80% as determined by SDS-PAGE and Coomassie blue staining.

**Stability** Stable for 12 months from the date of receipt of the product under proper storage and handling conditions. Avoid repeated freeze-thaw cycles.

**Storage** Store at -80 centigrade.

**Concentration** >50 ug/mL as determined by microplate BCA method.

**Preparation** Recombinant protein was captured through anti-DDK affinity column followed by conventional chromatography steps.

**Protein Families** Druggable Genome, Protease

**Full Length** Full L.

## GENE INFORMATION

**Gene Name** [KLK2 kallikrein related peptidase 2 \[ Homo sapiens \(human\) \]](#)

**Official Symbol** [KLK2](#)

**Synonyms** hK2; hGK-1; KLK2A2

**Gene ID** [3817](#)

**mRNA Refseq** [NM\\_005551.5](#)

 Tel: 1-631-559-9269 1-516-512-3133

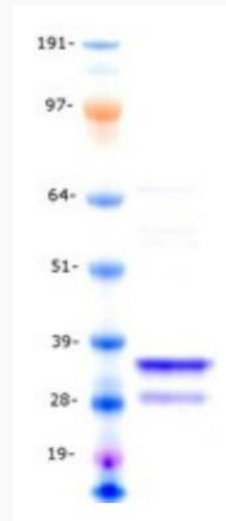
 Email: [info@creative-biomart.com](mailto:info@creative-biomart.com)  Fax: 1-631-938-8127

 45-1 Ramsey Road, Shirley, NY 11967, USA


**Protein Refseq** NP\_005542.1

**MIM** 147960


**UniProt ID** P20151



Coomassie blue staining of purified KLK2 protein.

 Tel: 1-631-559-9269 1-516-512-3133

 Email: [info@creative-biomart.com](mailto:info@creative-biomart.com)  Fax: 1-631-938-8127

 45-1 Ramsey Road, Shirley, NY 11967, USA