

## Recombinant Human KLK2 Protein (Pro19-Pro261), N-His tagged

Cat. No. KLK2-4351H Lot. No. (See product label)

### SPECIFICATION

<b>Product Overview</b>	Recombinant human KLK2 (Pro19-Pro261) fused with the N-His tag was expressed in E. coli.
<b>Species</b>	Human
<b>Source</b>	E.coli
<b>ProteinLength</b>	Pro19-Pro261
<b>Form</b>	Lyophilized powder/frozen liquid
<b>Molecular Mass</b>	29.16 kDa
<b>Purity</b>	>90% as determined by SDS-PAGE.
<b>Notes</b>	For research use only.
<b>Storage</b>	Use a manual defrost freezer and avoid repeated freeze thaw cycles. Store at 2 to 8 centigrade for one week. Store at -20 to -80 centigrade for twelve months from the date of receipt.
<b>Storage Buffer</b>	0.01M PBS, pH 7.4, 0.02% NLS
<b>Reconstitution</b>	Reconstitute in sterile water for a stock solution.

 Tel: 1-631-559-9269 1-516-512-3133

 Email: [info@creative-biomart.com](mailto:info@creative-biomart.com)  Fax: 1-631-938-8127

 45-1 Ramsey Road, Shirley, NY 11967, USA

**Shipping** They are shipped out with dry ice/blue ice unless customers require otherwise.

## GENE INFORMATION

**Gene Name** [KLK2 kallikrein-related peptidase 2 \[ Homo sapiens \(human\) \]](#)

**Official Symbol** [KLK2](#)

**Synonyms** KLK2; kallikrein-related peptidase 2; kallikrein 2, prostatic; kallikrein-2; tissue kallikrein-2; glandular kallikrein 2; glandular kallikrein-1; hK2; hGK-1; KLK2A2; FLJ17010; FLJ17011; MGC12201;

**Gene ID** [3817](#)

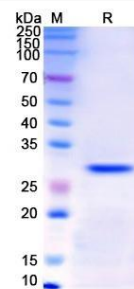
**mRNA Refseq** [NM\\_001002231](#)

**Protein Refseq** [NP\\_001002231](#)

**MIM** [147960](#)

**UniProt ID** [P20151](#)

### SDS-PAGE



 Tel: 1-631-559-9269 1-516-512-3133

 Email: [info@creative-biomart.com](mailto:info@creative-biomart.com)  Fax: 1-631-938-8127

 45-1 Ramsey Road, Shirley, NY 11967, USA