

Active Recombinant Human KLK3 Protein (18-261aa), C-His tagged

Cat. No. KLK3-01H Lot. No. (See product label)

SPECIFICATION

Product Overview Recombinant human Kallikrein 3 protein (18-261aa), fused to His-tag at C-terminus, was expressed in HEK293 and purified by using conventional chromatography techniques.

Species Human

Source HEK293


ProteinLength 18-261 aa

Description Kallikreins are a subgroup of serine proteases having diverse physiological functions. Growing evidence suggests that many kallikreins are implicated in carcinogenesis and some have potential as novel cancer and other disease biomarkers. The gene is one of the fifteen kallikrein subfamily members located in a cluster on chromosome 19. It encodes a single-chain glycoprotein, a protease which is synthesized in the epithelial cells of the prostate gland, and is present in seminal plasma. It is thought to function normally in the liquefaction of seminal coagulum, presumably by hydrolysis of the high molecular mass seminal vesicle protein. The serum level of this protein, called PSA in the clinical setting, is useful in the diagnosis and monitoring of prostatic carcinoma. Alternate splicing of this gene generates several transcript variants encoding different isoforms.

Form Liquid

 Tel: 1-631-559-9269 1-516-512-3133

 Email: info@creative-biomart.com  Fax: 1-631-938-8127

 45-1 Ramsey Road, Shirley, NY 11967, USA



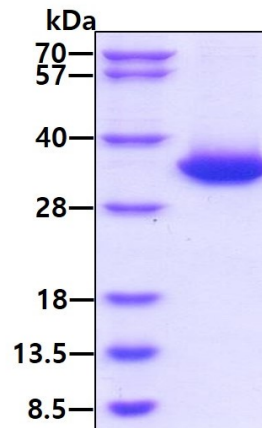
Bio-activity	> 250 pmol/min/μg, and is defined as the amount of enzyme cleaves 1pmole of Succinyl-Arg-Pro-Tyr-p-Nitroanilide to Succinyl-Arg-Pro-Tyr and p-Nitroanilide per minute at pH7.5 at 37 centigrade.
Molecular Mass	27.6 kDa (250 aa)
AA Sequence	APLILSRIVGGWECEKHSQPWQVLVASRGRAVCGGVLVHPQWVLTAAHCIRNKSVI LLGRHSLFHPEDTGQVFQVSHSFPHPPLYDMSLLKNRFLRPGDDSSHDLMMLRLSEP AELTDAVKVMDLPTQEPALGTTTCYASGWGSIEPEEFLTPKKLQCVDLHVISNDVCAQ VHPQKVTKFMLCAGRWTGGKSTCSGDSGGPLVCNGVLQGITSWGSEPCALPERPS LYTKVVHYRKWIKDTIVANP< HHHHHH>
Endotoxin	< 1 EU/μg of protein (determined by LAL method)
Purity	> 95 % by SDS-PAGE
Applications	SDS-PAGE, Enzyme Activity
Storage	Can be stored at +2 to +8 centigrade for 1 week. For long term storage, aliquot and store at -20 to -80 centigrade. Avoid repeated freezing and thawing cycles.
Concentration	0.25 mg/mL (determined by absorbance at 280nm)
Storage Buffer	Phosphate-Buffered Saline (pH 7.4) containing 10 % glycerol.
GENE INFORMATION	
Gene Name	KLK3 kallikrein related peptidase 3 [Homo sapiens (human)]
Official Symbol	KLK3

Tel: 1-631-559-9269 1-516-512-3133

Email: info@creative-biomart.com Fax: 1-631-938-8127

45-1 Ramsey Road, Shirley, NY 11967, USA

Synonyms	KLK3; kallikrein related peptidase 3; APS; PSA; hK3; KLK2A1; prostate-specific antigen; P-30 antigen; gamma-seminoprotein; kallikrein-3; semenogelase; seminin; EC 3.4.21.77
Gene ID	354
mRNA Refseq	NM_001648
Protein Refseq	NP_001639
MIM	176820
UniProt ID	P07288

SDS-PAGE

 Tel: 1-631-559-9269 1-516-512-3133

 Email: info@creative-biomart.com  Fax: 1-631-938-8127

 45-1 Ramsey Road, Shirley, NY 11967, USA