

Recombinant Human KLK3 Protein (Ile25-Pro261), C-His tagged

Cat. No. KLK3-2650H Lot. No. (See product label)

SPECIFICATION

Product Overview	Recombinant human KLK3 (Ile25-Pro261) protein fused with the C-terminal His tag was expressed in Mammalian cells.
Species	Human
Source	Mammalian Cells
ProteinLength	Ile25-Pro261
Molecular Mass	26.07 kDa
Purity	>90 % as determined by SDS-PAGE.
Notes	For research use only.
Storage	Use a manual defrost freezer and avoid repeated freeze thaw cycles. Store at 2 to 8 centigrade for one week. Store at -20 to -80 centigrade for twelve months from the date of receipt.
Storage Buffer	Supplied as solution form in PBS or lyophilized from PBS.
Reconstitution	Reconstitute in sterile water for a stock solution.
Shipping	In general, proteins are provided as lyophilized powder/frozen liquid. They are

 Tel: 1-631-559-9269 1-516-512-3133

 Email: info@creative-biomart.com  Fax: 1-631-938-8127

 45-1 Ramsey Road, Shirley, NY 11967, USA

shipped out with dry ice/blue ice unless customers require otherwise.

GENE INFORMATION

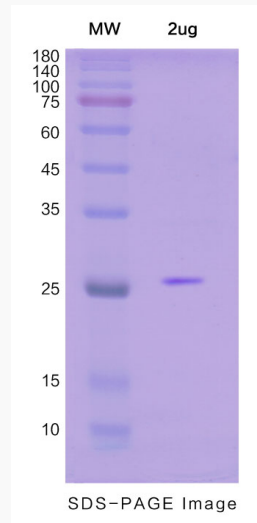
Gene Name	KLK3 kallikrein-related peptidase 3 [Homo sapiens (human)]
Official Symbol	KLK3
Synonyms	KLK3; kallikrein-related peptidase 3; APS, kallikrein 3, (prostate specific antigen); prostate-specific antigen; PSA; seminin; P-30 antigen; kallikrein-3; semenogelase; gamma-seminoprotein; prostate specific antigen; APS; hK3; KLK2A1;
Gene ID	354
mRNA Refseq	NM_001030047
Protein Refseq	NP_001025218
MIM	176820
UniProt ID	P07288

 Tel: 1-631-559-9269 1-516-512-3133

 Email: info@creative-biomart.com  Fax: 1-631-938-8127

 45-1 Ramsey Road, Shirley, NY 11967, USA

SDS-PAGE



 Tel: 1-631-559-9269 1-516-512-3133

 Email: info@creative-biomart.com  Fax: 1-631-938-8127

 45-1 Ramsey Road, Shirley, NY 11967, USA