

# Recombinant Human KLK3 Protein, Myc/DDK-tagged, C13 and N15-labeled

**Cat. No.** KLK3-2846H    **Lot. No.** (See product label)

## SPECIFICATION

<b>Product Overview</b>	KLK3 MS Standard C13 and N15-labeled recombinant protein (NP_001639) with a C-terminal MYC/DDK tag, was expressed in HEK293 cells.
<b>Species</b>	Human
<b>Source</b>	HEK293
<b>Description</b>	<p>Kallikreins are a subgroup of serine proteases having diverse physiological functions. Growing evidence suggests that many kallikreins are implicated in carcinogenesis and some have potential as novel cancer and other disease biomarkers. The gene is one of the fifteen kallikrein subfamily members located in a cluster on chromosome 19. It encodes a single-chain glycoprotein, a protease which is synthesized in the epithelial cells of the prostate gland, and is present in seminal plasma. It is thought to function normally in the liquefaction of seminal coagulum, presumably by hydrolysis of the high molecular mass seminal vesicle protein. The serum level of this protein, called PSA in the clinical setting, is useful in the diagnosis and monitoring of prostatic carcinoma. Alternate splicing of this gene generates several transcript variants encoding different isoforms.</p>
<b>Molecular Mass</b>	28.7 kDa
<b>AA Sequence</b>	MWVPPVFLTLSVTWIGAAPLILSRIVGGWECEKHSQPWQVLVASRGRAVCGGVLVH PQWVLTAAH CIRNKS VILLGRHSLFHPEDTGQVFQVSHSFPHPLYDMSLLKNRFLRP

 Tel: 1-631-559-9269    1-516-512-3133

 Email: [info@creative-biomart.com](mailto:info@creative-biomart.com)     Fax: 1-631-938-8127

 45-1 Ramsey Road, Shirley, NY 11967, USA

GDDSSHDLMLLRLSEPAELTDAVKVMDLPTQEPALGTTTCYASGWGSIEPEEFLTPKK  
 LQCVDLHVISNDVCAQVHPQKVTKFMLCAGRWTGGKSTCSGDSGGPLVCNGVLQG  
 ITSWGSEPCALPERPSLYTKVVHYRKWIKDTIVANPTRTRPLEQKLISEEDLAANDILD  
 YKDDDDKV

**Purity** > 80% as determined by SDS-PAGE and Coomassie blue staining

**Stability** Stable for 3 months from receipt of products under proper storage and handling conditions.

**Storage** Store at -80 centigrade. Avoid repeated freeze-thaw cycles.

**Concentration** 50 µg/mL as determined by BCA

**Storage Buffer** 100 mM glycine, 25 mM Tris-HCl, pH 7.3.

## GENE INFORMATION

**Gene Name** [KLK3 kallikrein-related peptidase 3 \[ Homo sapiens \(human\) \]](#)

**Official Symbol** [KLK3](#)

**Synonyms** KLK3; kallikrein-related peptidase 3; APS, kallikrein 3, (prostate specific antigen); prostate-specific antigen; PSA; seminin; P-30 antigen; kallikrein-3; semenogelase; gamma-seminoprotein; prostate specific antigen; APS; hK3; KLK2A1;

**Gene ID** [354](#)

**mRNA Refseq** [NM\\_001648](#)

**Protein Refseq** [NP\\_001639](#)

 Tel: 1-631-559-9269 1-516-512-3133

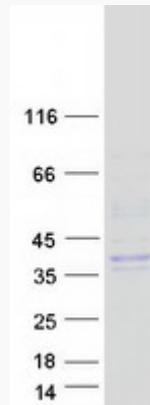
 Email: [info@creative-biomart.com](mailto:info@creative-biomart.com)  Fax: 1-631-938-8127

 45-1 Ramsey Road, Shirley, NY 11967, USA

**MIM** 176820

**UniProt ID** P07288

**SDS-PAGE**



 Tel: 1-631-559-9269 1-516-512-3133

 Email: [info@creative-biomart.com](mailto:info@creative-biomart.com)  Fax: 1-631-938-8127

 45-1 Ramsey Road, Shirley, NY 11967, USA