

Recombinant Human KLK3 Protein (Ala18-Pro261), C-His tagged

Cat. No. KLK3-4263H **Lot. No.** (See product label)

SPECIFICATION

Product Overview	Recombinant human KLK3 (Ala18-Pro261) fused with the C-terminal His tag was expressed in Mammalian cells.
Species	Human
Source	Mammalian Cells
ProteinLength	Ala18-Pro261
Form	Lyophilized powder/frozen liquid
Molecular Mass	26.84 kDa
Endotoxin	< 1.0 EU/μg of the protein as determined by the LAL method.
Purity	>90% as determined by SDS-PAGE.
Notes	For research use only.
Storage	Use a manual defrost freezer and avoid repeated freeze thaw cycles. Store at 2 to 8 centigrade for one week. Store at -20 to -80 centigrade for twelve months from the date of receipt.
Storage Buffer	Supplied as solution form in PBS or lyophilized from PBS.

 Tel: 1-631-559-9269 1-516-512-3133

 Email: info@creative-biomart.com  Fax: 1-631-938-8127

 45-1 Ramsey Road, Shirley, NY 11967, USA

Reconstitution Reconstitute in sterile water for a stock solution.

Shipping They are shipped out with dry ice/blue ice unless customers require otherwise.

GENE INFORMATION

Gene Name [KLK3 kallikrein-related peptidase 3 \[Homo sapiens \(human\) \]](#)

Official Symbol [KLK3](#)

Synonyms KLK3; kallikrein-related peptidase 3; APS, kallikrein 3, (prostate specific antigen); prostate-specific antigen; PSA; seminin; P-30 antigen; kallikrein-3; semenogelase; gamma-seminoprotein; prostate specific antigen; APS; hK3; KLK2A1;

Gene ID [354](#)

mRNA Refseq [NM_001030047](#)

Protein Refseq [NP_001025218](#)

MIM [176820](#)

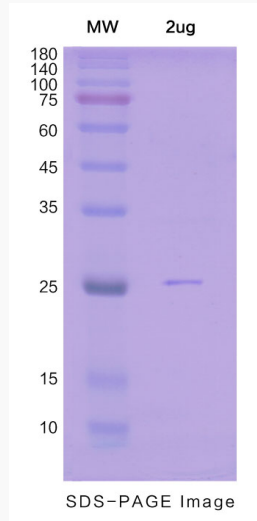
UniProt ID [P07288](#)

 Tel: 1-631-559-9269 1-516-512-3133

 Email: info@creative-biomart.com  Fax: 1-631-938-8127

 45-1 Ramsey Road, Shirley, NY 11967, USA

SDS-PAGE



 Tel: 1-631-559-9269 1-516-512-3133

 Email: info@creative-biomart.com  Fax: 1-631-938-8127

 45-1 Ramsey Road, Shirley, NY 11967, USA