

# Recombinant Full Length Human KLK3 Protein, C-Flag-tagged

**Cat. No.** KLK3-850HFL    **Lot. No.** (See product label)

## SPECIFICATION

<b>Product Overview</b>	Recombinant Full Length Human KLK3 Protein, fused to Flag-tag at C-terminus, was expressed in Mammalian cells.
<b>Species</b>	Human
<b>Source</b>	Mammalian Cells
<b>Description</b>	<p>Kallikreins are a subgroup of serine proteases having diverse physiological functions. Growing evidence suggests that many kallikreins are implicated in carcinogenesis and some have potential as novel cancer and other disease biomarkers. The gene is one of the fifteen kallikrein subfamily members located in a cluster on chromosome 19. It encodes a single-chain glycoprotein, a protease which is synthesized in the epithelial cells of the prostate gland, and is present in seminal plasma. It is thought to function normally in the liquefaction of seminal coagulum, presumably by hydrolysis of the high molecular mass seminal vesicle protein. The serum level of this protein, called PSA in the clinical setting, is useful in the diagnosis and monitoring of prostatic carcinoma. Alternate splicing of this gene generates several transcript variants encoding different isoforms.</p>
<b>Form</b>	25 mM Tris HCl, pH 7.3, 100 mM glycine, 10% glycerol.
<b>Molecular Mass</b>	26.8 kDa
<b>AA Sequence</b>	MWVPVFLTSLVWIGAAPLILSRIVGGWECEKHSQPWQVLVASRGRAVCGGVLVH PQWVLTAHCIRNK SVILLGRHSLFHPEDTGQVFQVSHSFPHPLYDMSLLKNRFLR

 Tel: 1-631-559-9269    1-516-512-3133

 Email: [info@creative-biomart.com](mailto:info@creative-biomart.com)     Fax: 1-631-938-8127

 45-1 Ramsey Road, Shirley, NY 11967, USA

PGDDSSHDLMLLRLSEPAELTDAVKVMD LPTQEPALGTTTCYASGWGSIEPEEFLTP  
 KKLQCVDLHVISNDVCAQVHPQKVTKFMLCAGRWTGGKSTCS  
 GDSGGPLVCNGVLQGITSWGSEPCALPERPSLYTKVVHYRKWIKDTIVANPTRTRPL  
 EQKLISEEDLAANDILDYKDDDDKV

<b>Purity</b>	> 80% as determined by SDS-PAGE and Coomassie blue staining.
<b>Stability</b>	Stable for 12 months from the date of receipt of the product under proper storage and handling conditions. Avoid repeated freeze-thaw cycles.
<b>Storage</b>	Store at -80 centigrade.
<b>Concentration</b>	>50 ug/mL as determined by microplate BCA method.
<b>Preparation</b>	Recombinant protein was captured through anti-DDK affinity column followed by conventional chromatography steps.
<b>Protein Families</b>	Druggable Genome, Protease, Secreted Protein
<b>Protein Pathways</b>	Pathways in cancer, Prostate cancer
<b>Full Length</b>	Full L.

## GENE INFORMATION

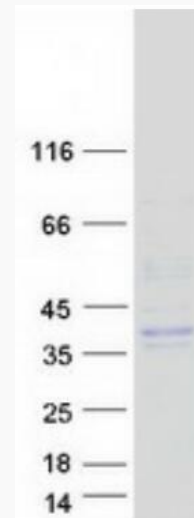
<b>Gene Name</b>	KLK3 kallikrein related peptidase 3 [ Homo sapiens (human) ]
<b>Official Symbol</b>	KLK3
<b>Synonyms</b>	APS; PSA; hK3; KLK2A1

 Tel: 1-631-559-9269 1-516-512-3133

 Email: [info@creative-biomart.com](mailto:info@creative-biomart.com)  Fax: 1-631-938-8127

 45-1 Ramsey Road, Shirley, NY 11967, USA

Gene ID	354
mRNA Refseq	NM_001648.2
Protein Refseq	NP_001639.1
MIM	176820
UniProt ID	P07288



Coomassie blue staining of purified KLK3 protein.

Tel: 1-631-559-9269 1-516-512-3133

Email: [info@creative-biomart.com](mailto:info@creative-biomart.com) Fax: 1-631-938-8127

45-1 Ramsey Road, Shirley, NY 11967, USA