

Recombinant Human KLK4 Protein (Ser27-Ser254), C-His tagged

Cat. No. KLK4-3313H Lot. No. (See product label)

SPECIFICATION

Product Overview	Recombinant human KLK4 (Ser27-Ser254) protein fused with the C-terminal His tag was expressed in Mammalian cells.
Species	Human
Source	Mammalian Cells
ProteinLength	Ser27-Ser254
Molecular Mass	25.08 kDa
Purity	>90 % as determined by SDS-PAGE.
Notes	For research use only.
Storage	Use a manual defrost freezer and avoid repeated freeze thaw cycles. Store at 2 to 8 centigrade for one week. Store at -20 to -80 centigrade for twelve months from the date of receipt.
Storage Buffer	Supplied as solution form in PBS or lyophilized from PBS.
Reconstitution	Reconstitute in sterile water for a stock solution.
Shipping	In general, proteins are provided as lyophilized powder/frozen liquid. They are

 Tel: 1-631-559-9269 1-516-512-3133

 Email: info@creative-biomart.com  Fax: 1-631-938-8127

 45-1 Ramsey Road, Shirley, NY 11967, USA

shipped out with dry ice/blue ice unless customers require otherwise.

GENE INFORMATION

Gene Name [KLK4 kallikrein-related peptidase 4 \[Homo sapiens \(human\) \]](#)

Official Symbol [KLK4](#)

Synonyms [KLK4](#); kallikrein-related peptidase 4; kallikrein 4 (prostase, enamel matrix, prostate), PRSS17; kallikrein-4; EMSP; EMSP1; KLK L1; PSTS; prostase; serine protease 17; kallikrein-like protein 1; androgen-regulated message 1; enamel matrix serine protease 1; enamel matrix serine proteinase 1; ARM1; AI2A1; KLK-L1; PRSS17; kallikrein; MGC116827; MGC116828;

Gene ID [9622](#)

mRNA Refseq [NM_004917](#)

Protein Refseq [NP_004908](#)

MIM [603767](#)

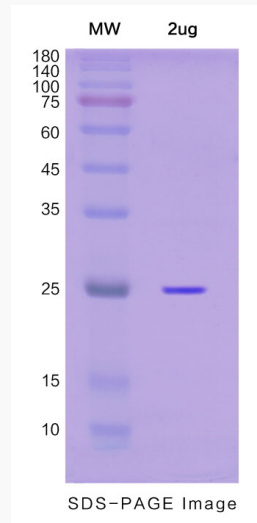
UniProt ID [Q9Y5K2](#)

 Tel: 1-631-559-9269 1-516-512-3133

 Email: info@creative-biomart.com  Fax: 1-631-938-8127

 45-1 Ramsey Road, Shirley, NY 11967, USA

SDS-PAGE



 Tel: 1-631-559-9269 1-516-512-3133

 Email: info@creative-biomart.com  Fax: 1-631-938-8127

 45-1 Ramsey Road, Shirley, NY 11967, USA