

## Recombinant Human KLK4 Protein, GST-tagged

**Cat. No.** KLK4-4936H    **Lot. No.** (See product label)

### SPECIFICATION

<b>Product Overview</b>	Human KLK4 full-length ORF ( AAH69429.1, 1 a.a. - 254 a.a.) recombinant protein with GST-tag at N-terminal.
<b>Species</b>	Human
<b>Source</b>	Wheat Germ
<b>Description</b>	<p>Kallikreins are a subgroup of serine proteases having diverse physiological functions. Growing evidence suggests that many kallikreins are implicated in carcinogenesis and some have potential as novel cancer and other disease biomarkers. This gene is one of the fifteen kallikrein subfamily members located in a cluster on chromosome 19. In some tissues its expression is hormonally regulated. The expression pattern of a similar mouse protein in murine developing teeth supports a role for the protein in the degradation of enamel proteins. Alternate splice variants for this gene have been described, but their biological validity has not been determined. [provided by RefSeq</p>
<b>Molecular Mass</b>	53.4 kDa
<b>AA Sequence</b>	<p>MATAGNPWGWFLGYLILGVAGSLVSGSCSQIINGEDCSPHSQPWQAALVMENELF            CSGVLVHPQWVLSAAHCFQNSYTIGLGLHSLEADQEPGSQMVEASLSVRHPEYNR            PLLANDLMLIKLDESSESdTIRSIASQCPTAGNSCLVSGWGLLANGRMPTVLQCV            NVSVVSEEVCSKLYDPLYHPSMFCAGGGQDQKDSCNGDSGGPLICNGYLQGLVSF            GKAPCGQVGPVGVYTNLCKFTEWIEKTVQAS</p>
<b>Applications</b>	Enzyme-linked Immunoabsorbent Assay

 Tel: 1-631-559-9269    1-516-512-3133

 Email: [info@creative-biomart.com](mailto:info@creative-biomart.com)     Fax: 1-631-938-8127

 45-1 Ramsey Road, Shirley, NY 11967, USA

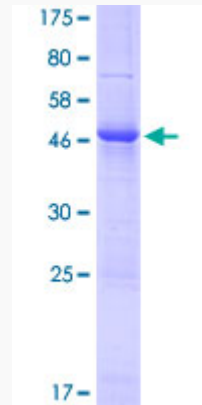
	Western Blot (Recombinant protein) Antibody Production Protein Array
<b>Notes</b>	Best use within three months from the date of receipt of this protein.
<b>Storage</b>	Store at -80 centigrade. Aliquot to avoid repeated freezing and thawing.
<b>Storage Buffer</b>	50 mM Tris-HCl, 10 mM reduced Glutathione, pH=8.0 in the elution buffer.
<b>GENE INFORMATION</b>	
<b>Gene Name</b>	<a href="#">KLK4 kallikrein-related peptidase 4 [ Homo sapiens ]</a>
<b>Official Symbol</b>	<a href="#">KLK4</a>
<b>Synonyms</b>	KLK4; kallikrein-related peptidase 4; kallikrein 4 (prostase, enamel matrix, prostate) , PRSS17; kallikrein-4; EMSP; EMSP1; KLK L1; PSTS; prostase; serine protease 17; kallikrein-like protein 1; androgen-regulated message 1; enamel matrix serine protease 1; enamel matrix serine proteinase 1; ARM1; AI2A1; KLK-L1; PRSS17; kallikrein; MGC116827; MGC116828;
<b>Gene ID</b>	<a href="#">9622</a>
<b>mRNA Refseq</b>	<a href="#">NM_004917</a>
<b>Protein Refseq</b>	<a href="#">NP_004908</a>
<b>MIM</b>	<a href="#">603767</a>
<b>UniProt ID</b>	<a href="#">Q9Y5K2</a>

 Tel: 1-631-559-9269 1-516-512-3133

 Email: [info@creative-biomart.com](mailto:info@creative-biomart.com)  Fax: 1-631-938-8127

 45-1 Ramsey Road, Shirley, NY 11967, USA

**Quality Control  
Testing**



12.5% SDS-PAGE Stained with Coomassie Blue

 Tel: 1-631-559-9269 1-516-512-3133

 Email: [info@creative-biomart.com](mailto:info@creative-biomart.com)  Fax: 1-631-938-8127

 45-1 Ramsey Road, Shirley, NY 11967, USA