

Recombinant Human KLK5 Protein (67-293aa), C-His tagged

Cat. No. KLK5-3H Lot. No. (See product label)

SPECIFICATION

Product Overview	Recombinant human KLK5 (67-293 aa), fused to His-tag at C-terminus, was expressed in insect cell and purified by using conventional chromatography techniques.
Species	Human
Source	Insect Cells
ProteinLength	67-293 aa
Description	Kallikreins are a subgroup of serine proteases having diverse physiological functions. Growing evidence suggests that many kallikreins are implicated in carcinogenesis and some have potential as novel cancer and other disease biomarkers. This gene is one of the fifteen kallikrein subfamily members located in a cluster on chromosome 19. Its expression is up-regulated by estrogens and progestins. The encoded protein is secreted and may be involved in desquamation in the epidermis. Alternative splicing results in multiple transcript variants encoding the same protein.
Form	Liquid
Molecular Mass	26.2 kDa (236aa)
AA Sequence	ADLIINGSDCDMHTQPWQAALLLRPNQLYCGAVLVHPQWLLTAAHCRKKVFRVRLG HYSLSVPVYESGQQMFQGVKSIPHPGYSHPGHSNDLMLIKLNRRIRPTKDVRPINVSS HCPSAGTKCLVSGWGTTKSPQVHFPKVLQCLNISVLSQKRCEDAYPRQIDDTMFCA

 Tel: 1-631-559-9269 1-516-512-3133

 Email: info@creative-biomart.com  Fax: 1-631-938-8127

 45-1 Ramsey Road, Shirley, NY 11967, USA

	GDKAGRDSCQGDSGGPVVCNGSLQGLVSWG DYPCARPNRPGVYTNLCKFTKWIQ ETIQANSHHHHHH
Endotoxin	< 1 EU/μg of protein (determined by LAL method)
Purity	> 95% by SDS-PAGE
Applications	SDS-PAGE
Notes	Note: For research use only. This product is not intended or approved for human, diagnostics or veterinary use.
Storage	Can be stored at +2 to +8 centigrade for 1 week. For long term storage, aliquot and store at -20 to -80 centigrade. Avoid repeated freezing and thawing cycles.
Concentration	0.5 mg/mL (determined by absorbance at 280nm)
Storage Buffer	Phosphate-Buffered Saline (pH 7.4) containing 10% glycerol

GENE INFORMATION

Gene Name	KLK5 kallikrein-related peptidase 5 [Homo sapiens (human)]
Official Symbol	KLK5
Synonyms	KLK5; kallikrein-related peptidase 5; kallikrein 5; kallikrein-5; KLK L2; SCTE; kallikrein-like protein 2; stratum corneum tryptic enzyme; KLKL2; KLK-L2
Gene ID	25818
mRNA Refseq	NM_001077491

 Tel: 1-631-559-9269 1-516-512-3133

 Email: info@creative-biomart.com  Fax: 1-631-938-8127

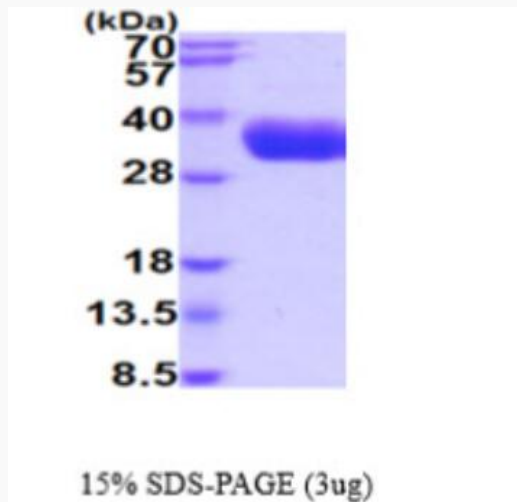
 45-1 Ramsey Road, Shirley, NY 11967, USA

Protein Refseq NP_001070959

MIM 605643

UniProt ID Q9Y337

SDS-PAGE



3 µg by SDS-PAGE under reducing condition and visualized by coomassie blue stain.

 Tel: 1-631-559-9269 1-516-512-3133

 Email: info@creative-biomart.com  Fax: 1-631-938-8127

 45-1 Ramsey Road, Shirley, NY 11967, USA