

Recombinant Human KLK5 Protein, GST-tagged

Cat. No. KLK5-4934H **Lot. No.** (See product label)

SPECIFICATION

Product Overview Human KLK5 full-length ORF (NP_036559.1, 1 a.a. - 293 a.a.) recombinant protein with GST-tag at N-terminal.

Species Human

Source Wheat Germ

Description

Kallikreins are a subgroup of serine proteases having diverse physiological functions. Growing evidence suggests that many kallikreins are implicated in carcinogenesis and some have potential as novel cancer and other disease biomarkers. This gene is one of the fifteen kallikrein subfamily members located in a cluster on chromosome 19. Its expression is up-regulated by estrogens and progestins. The encoded protein is secreted and may be involved in desquamation in the epidermis. Alternative splicing results in multiple transcript variants encoding the same protein. [provided by RefSeq]

Molecular Mass 58.4 kDa

AA Sequence

MATARPPWMWVLCALITALLLGVTEHVLANNDVSCDHPSTVPSGSNQDLGAGAG
EDARSDDSSSRIINGSDCDMHTQPWQAALLLRPNQLYCGAVLVHPQWLLTAAHCRK
KVFRVRLGHYSLSPVYESGQQMFQGVKSIPHPGYSHPGHSNDLMLIKLNRIRPTK
DVRPINVSSHCP SAGTKCLVSGWGTTKSPQVHFPKVLQCLNISVLSQKRCE DAYPR
QIDDTMFCAGDKAGR DSCQGDSSGGPVVCNGSLQGLVSWGDYPCARP NRPGVYTN
LCKFTKWIQETIQANS

 Tel: 1-631-559-9269 1-516-512-3133

 Email: info@creative-biomart.com  Fax: 1-631-938-8127

 45-1 Ramsey Road, Shirley, NY 11967, USA

| | |
|-----------------------|---|
| Applications | Enzyme-linked Immunoabsorbent Assay Western Blot (Recombinant protein) Antibody Production Protein Array |
| Notes | Best use within three months from the date of receipt of this protein. |
| Storage | Store at -80 centigrade. Aliquot to avoid repeated freezing and thawing. |
| Storage Buffer | 50 mM Tris-HCl, 10 mM reduced Glutathione, pH=8.0 in the elution buffer. |

GENE INFORMATION

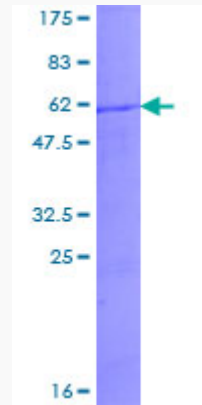
| | |
|------------------------|---|
| Gene Name | KLK5 kallikrein-related peptidase 5 [Homo sapiens] |
| Official Symbol | KLK5 |
| Synonyms | KLK5; kallikrein-related peptidase 5; kallikrein 5; kallikrein-5; KLK L2; SCTE; kallikrein-like protein 2; stratum corneum tryptic enzyme; KLKL2; KLK-L2; |
| Gene ID | 25818 |
| mRNA Refseq | NM_001077491 |
| Protein Refseq | NP_001070959 |
| MIM | 605643 |
| UniProt ID | Q9Y337 |

 Tel: 1-631-559-9269 1-516-512-3133

 Email: info@creative-biomart.com  Fax: 1-631-938-8127

 45-1 Ramsey Road, Shirley, NY 11967, USA

**Quality Control
Testing**



12.5% SDS-PAGE Stained with Coomassie Blue

 Tel: 1-631-559-9269 1-516-512-3133

 Email: info@creative-biomart.com  Fax: 1-631-938-8127

 45-1 Ramsey Road, Shirley, NY 11967, USA