

Recombinant Human KLK5 protein, His-tagged

Cat. No. KLK5-5792H **Lot. No.** (See product label)

SPECIFICATION

Product Overview	Recombinant Human KLK5 protein(Q9Y337)(Val23-Ser293), fused with C-terminal His tag, was expressed in HEK293.
Species	Human
Source	HEK293
ProteinLength	Val23-Ser293
Tag	C-His
Form	Supplied as 0.22µm filtered solution in 50mM MES, 150mM NaCl (pH 5.5).
Bio-activity	Immobilized Human Kallikrein 5, His Tag at 0.5µg/ml (100µl/Well) on the plate. Dose response curve for Anti-Kallikrein 5 Antibody, hFc Tag with the EC50 of 3.7ng/ml determined by ELISA.
Molecular Mass	The protein has a predicted MW of 30.7 kDa. Due to glycosylation, the protein migrates to 42-48 kDa based on Tris-Bis PAGE result.
Endotoxin	Less than 1EU per µg by the LAL method.
Purity	> 95% as determined by Tris-Bis PAGE;> 95% as determined by HPLC
Storage	Valid for 12 months from date of receipt when stored at -80°C. Recommend to aliquot

 Tel: 1-631-559-9269 1-516-512-3133

 Email: info@creative-biomart.com  Fax: 1-631-938-8127

 45-1 Ramsey Road, Shirley, NY 11967, USA

the protein into smaller quantities for optimal storage. Please do not repeated freeze-thaw cycles.

Reconstitution

It is recommended that sterile water be added to the vial to prepare a stock solution of 0.2 ug/ul. Centrifuge the vial at 4°C before opening to recover the entire contents.

GENE INFORMATION

Gene Name [KLK5 kallikrein-related peptidase 5 \[Homo sapiens \]](#)

Official Symbol [KLK5](#)

Synonyms [KLK5](#); kallikrein-related peptidase 5; kallikrein 5; kallikrein-5; KLK L2; SCTE; kallikrein-like protein 2; stratum corneum tryptic enzyme; KLKL2; KLK-L2;

Gene ID [25818](#)

mRNA Refseq [NM_001077491](#)

Protein Refseq [NP_001070959](#)

MIM [605643](#)

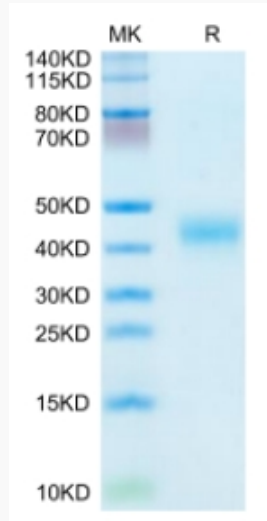
UniProt ID [Q9Y337](#)

 Tel: 1-631-559-9269 1-516-512-3133

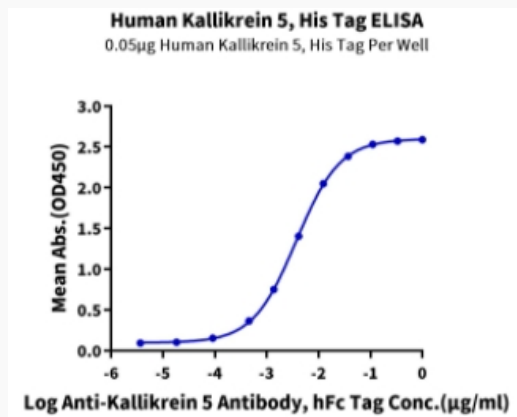
 Email: info@creative-biomart.com  Fax: 1-631-938-8127

 45-1 Ramsey Road, Shirley, NY 11967, USA

Tris-Bis PAGE



ELISA Data



Tel: 1-631-559-9269 1-516-512-3133

Email: info@creative-biomart.com Fax: 1-631-938-8127

45-1 Ramsey Road, Shirley, NY 11967, USA