

# Recombinant Human KLK5 Protein, Myc/DDK-tagged, C13 and N15-labeled

**Cat. No.** KLK5-5870H    **Lot. No.** (See product label)

## SPECIFICATION

### Product Overview

KLK5 MS Standard C13 and N15-labeled recombinant protein (NP\_001070959) with a C-terminal MYC/DDK tag, was expressed in HEK293 cells.

### Species

Human

### Source

HEK293

### Description

Kallikreins are a subgroup of serine proteases having diverse physiological functions. Growing evidence suggests that many kallikreins are implicated in carcinogenesis and some have potential as novel cancer and other disease biomarkers. This gene is one of the fifteen kallikrein subfamily members located in a cluster on chromosome 19. Its expression is up-regulated by estrogens and progestins. The encoded protein is secreted and may be involved in desquamation in the epidermis. Alternative splicing results in multiple transcript variants encoding the same protein.

### Molecular Mass

32 kDa

### AA Sequence

MATARPPWMWVLCALITALLLGVTEHVLANNVSCDHPSTVPSGSNQDLGAGAG  
EDARSDDSSSRIINGSDCDMHTQPWQAALLLRPNQLYCGAVLVHPQWLLTAAHCRK  
KVFRVRLGHYSLSPVYESGQQMFQGVKSIPHPGYSHPGHSNDLMLIKLNRIRPTK  
DVRPINVSSHCPASAGTKCLVSGWGTTKSPQVHFPKVLQCLNISVLSQKRCEAYPR  
QIDDTMFCAGDKAGRDSQGDSSGGPVVCNGSLQGLVSWGDYPCARPNRPGVYTN  
LCKFTKWIQETIQANSTRTRPLEQKLISEEDLAANDILDYKDDDDKV

 Tel: 1-631-559-9269    1-516-512-3133

 Email: [info@creative-biomart.com](mailto:info@creative-biomart.com)     Fax: 1-631-938-8127

 45-1 Ramsey Road, Shirley, NY 11967, USA



<b>Purity</b>	> 80% as determined by SDS-PAGE and Coomassie blue staining
<b>Stability</b>	Stable for 3 months from receipt of products under proper storage and handling conditions.
<b>Storage</b>	Store at -80 centigrade. Avoid repeated freeze-thaw cycles.
<b>Concentration</b>	50 µg/mL as determined by BCA
<b>Storage Buffer</b>	100 mM glycine, 25 mM Tris-HCl, pH 7.3.

## GENE INFORMATION

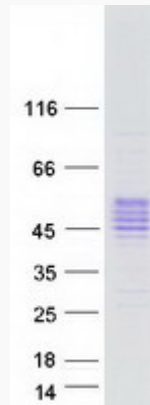
<b>Gene Name</b>	KLK5 kallikrein-related peptidase 5 [ Homo sapiens (human) ]
<b>Official Symbol</b>	KLK5
<b>Synonyms</b>	KLK5; kallikrein-related peptidase 5; kallikrein 5; kallikrein-5; KLK L2; SCTE; kallikrein-like protein 2; stratum corneum tryptic enzyme; KLKL2; KLK-L2;
<b>Gene ID</b>	25818
<b>mRNA Refseq</b>	NM_001077491
<b>Protein Refseq</b>	NP_001070959
<b>MIM</b>	605643
<b>UniProt ID</b>	Q9Y337

Tel: 1-631-559-9269 1-516-512-3133

Email: [info@creative-biomart.com](mailto:info@creative-biomart.com) Fax: 1-631-938-8127

45-1 Ramsey Road, Shirley, NY 11967, USA

**SDS-PAGE**



 Tel: 1-631-559-9269 1-516-512-3133

 Email: [info@creative-biomart.com](mailto:info@creative-biomart.com)  Fax: 1-631-938-8127

 45-1 Ramsey Road, Shirley, NY 11967, USA