

Recombinant Human KLK6 Protein, His tagged

Cat. No. KLK6-25H Lot. No. (See product label)

SPECIFICATION

Product Overview	Recombinant Human KLK6 Protein, Sourced from E.coli, Glu18-Lys244, with N-terminal His Tag.
Species	Human
Source	E.coli
ProteinLength	18-244 aa
Description	Kallikrein 6 (KLK6) is a serine protease found in milk, cerebrospinal fluid, salivary glands, as well as other fluids. It is expressed in the brain stem and spinal cord and is involved in various neurodegenerative disorders. Expression of KLK6 can also be an indicator in gastric and pancreatic cancers.
Form	Lyophilized from 1x PBS with Trehalose
Molecular Mass	27.8 kDa
Purity	>90% by SDS-PAGE
Applications	ELISA and Western Blot Analysis
Storage	2 years at -20 to -80 centigrade as supplied. Upon reconstitution: 2 years at -80 centigrade; 2 years at -20 centigrade For long-term storage, store for up to 2 years at -20 & -80 centigrade after reconstitution. Expiration is 2 years from date of receipt.

 Tel: 1-631-559-9269 1-516-512-3133

 Email: info@creative-biomart.com  Fax: 1-631-938-8127

 45-1 Ramsey Road, Shirley, NY 11967, USA

Shipping Ambient

Reconstitution Reconstitute at 10 µg/mL in sterile PBS containing at least 0.1% protein.

GENE INFORMATION

Gene Name KLK6 kallikrein related peptidase 6 [Homo sapiens (human)]

Official Symbol KLK6

Synonyms KLK6; kallikrein related peptidase 6; hK6; Bssp; Klk7; SP59; PRSS9; PRSS18;

Gene ID 5653

mRNA Refseq NM_002774

Protein Refseq NP_002765

MIM 602652

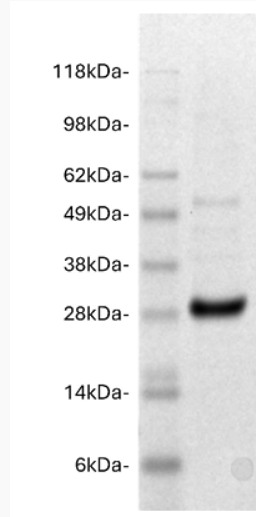
UniProt ID Q92876

 Tel: 1-631-559-9269 1-516-512-3133

 Email: info@creative-biomart.com  Fax: 1-631-938-8127

 45-1 Ramsey Road, Shirley, NY 11967, USA

SDS-PAGE



Human KLK6 (2 μ g) on a Coomassie stained 4-12% SDS-PAGE gel, reducing conditions.

 Tel: 1-631-559-9269 1-516-512-3133

 Email: info@creative-biomart.com  Fax: 1-631-938-8127

 45-1 Ramsey Road, Shirley, NY 11967, USA