

Recombinant Human KLK6 Protein (Glu17-Lys244), C-His tagged

Cat. No. KLK6-2629H Lot. No. (See product label)

SPECIFICATION

Product Overview	Recombinant human KLK6 (Glu17-Lys244) protein fused with the C-terminal His tag was expressed in Mammalian cells.
Species	Human
Source	Mammalian Cells
ProteinLength	Glu17-Lys244
Molecular Mass	25.08 kDa
Purity	>90 % as determined by SDS-PAGE.
Notes	For research use only.
Storage	Use a manual defrost freezer and avoid repeated freeze thaw cycles. Store at 2 to 8 centigrade for one week. Store at -20 to -80 centigrade for twelve months from the date of receipt.
Storage Buffer	Supplied as solution form in PBS or lyophilized from PBS.
Reconstitution	Reconstitute in sterile water for a stock solution.
Shipping	In general, proteins are provided as lyophilized powder/frozen liquid. They are

 Tel: 1-631-559-9269 1-516-512-3133

 Email: info@creative-biomart.com  Fax: 1-631-938-8127

 45-1 Ramsey Road, Shirley, NY 11967, USA

shipped out with dry ice/blue ice unless customers require otherwise.

GENE INFORMATION

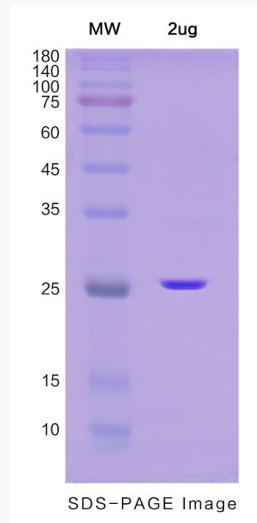
Gene Name	KLK6 kallikrein-related peptidase 6 [Homo sapiens (human)]
Official Symbol	KLK6
Synonyms	KLK6; kallikrein-related peptidase 6; kallikrein 6 (neurosin, zyme), protease, serine, 18, PRSS9, PRSS18; kallikrein-6; Bssp; Klk7; neurosin; zyme; protease M; serine protease 9; serine protease 18; hK6; SP59; PRSS9; PRSS18; MGC9355;
Gene ID	5653
mRNA Refseq	NM_001012964
Protein Refseq	NP_001012982
MIM	602652
UniProt ID	Q92876

 Tel: 1-631-559-9269 1-516-512-3133

 Email: info@creative-biomart.com  Fax: 1-631-938-8127

 45-1 Ramsey Road, Shirley, NY 11967, USA

SDS-PAGE



 Tel: 1-631-559-9269 1-516-512-3133

 Email: info@creative-biomart.com  Fax: 1-631-938-8127

 45-1 Ramsey Road, Shirley, NY 11967, USA