

Recombinant Human KLK6 Protein, Myc/DDK-tagged, C13 and N15-labeled

Cat. No. KLK6-2781H **Lot. No.** (See product label)

SPECIFICATION

Product Overview	KLK6 MS Standard C13 and N15-labeled recombinant protein (NP_001012982) with a C-terminal MYC/DDK tag, was expressed in HEK293 cells.
Species	Human
Source	HEK293
Description	<p>This gene encodes a member of the kallikrein subfamily of the peptidase S1 family of serine proteases. Growing evidence suggests that many kallikreins are implicated in carcinogenesis and some have potential as novel cancer and other disease biomarkers. The encoded preproprotein is proteolytically processed to generate the mature protease. Expression of this protease is regulated by steroid hormones and may be elevated in multiple human cancers and in serum from psoriasis patients. The encoded protease may participate in the cleavage of amyloid precursor protein and alpha-synuclein, thus implicating this protease in Alzheimer's and Parkinson's disease, respectively. This gene is located in a gene cluster on chromosome 19. Alternative splicing results in multiple transcript variants, at least one of which encodes an isoform that is proteolytically processed.</p>
Molecular Mass	26.9 kDa
AA Sequence	MKKLMVVLSLIAAAWAEQNKLVHGGPCDKTSHPYQAALYTSGHLLCGGVLIHPLW VLTAAHCKKPNLQVFLGKHNLQRRESSQEQSSVVRVHDPDYDAASHDQDIMLLRLA

 Tel: 1-631-559-9269 1-516-512-3133

 Email: info@creative-biomart.com  Fax: 1-631-938-8127

 45-1 Ramsey Road, Shirley, NY 11967, USA

RPAKLSELIQPLPLERDCSANTTSCHILGWGKTADGDFPDTIQCAYIHLVSREECEHA
 YPGQITQNMLCAGDEKYGKDSCQGDSSGGLVCGDHLRGLVSWGNI PCGSKEKPG
 VYTNVCRYTNWIQKTIQAKTRTRPLEQKLISEEDLAANDILDYKDDDDKV

Purity > 80% as determined by SDS-PAGE and Coomassie blue staining

Stability Stable for 3 months from receipt of products under proper storage and handling conditions.

Storage Store at -80 centigrade. Avoid repeated freeze-thaw cycles.

Concentration 50 µg/mL as determined by BCA

Storage Buffer 100 mM glycine, 25 mM Tris-HCl, pH 7.3.

GENE INFORMATION

Gene Name [KLK6 kallikrein-related peptidase 6 \[Homo sapiens \(human\) \]](#)

Official Symbol [KLK6](#)

Synonyms KLK6; kallikrein-related peptidase 6; kallikrein 6 (neurosin, zyme), protease, serine, 18, PRSS9, PRSS18; kallikrein-6; Bssp; Klk7; neurosin; zyme; protease M; serine protease 9; serine protease 18; hK6; SP59; PRSS9; PRSS18; MGC9355;

Gene ID [5653](#)

mRNA Refseq [NM_001012964](#)

Protein Refseq [NP_001012982](#)

 Tel: 1-631-559-9269 1-516-512-3133

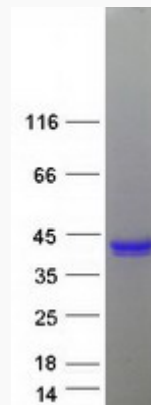
 Email: info@creative-biomart.com  Fax: 1-631-938-8127

 45-1 Ramsey Road, Shirley, NY 11967, USA

MIM 602652

UniProt ID Q92876

SDS-PAGE



 Tel: 1-631-559-9269 1-516-512-3133

 Email: info@creative-biomart.com  Fax: 1-631-938-8127

 45-1 Ramsey Road, Shirley, NY 11967, USA