

Recombinant Human KLK6 Protein, His-tagged

Cat. No. KLK6-9483H **Lot. No.** (See product label)

SPECIFICATION

Product Overview	Recombinant Human Kallikrein-6/KLK6 protein(Glu17-Lys244) with a N-terminal 6x histidine tag was expressed in E. coli.
Species	Human
Source	E.coli
ProteinLength	17-244 a.a.
Description	<p>This gene encodes a member of the kallikrein subfamily of the peptidase S1 family of serine proteases. Growing evidence suggests that many kallikreins are implicated in carcinogenesis and some have potential as novel cancer and other disease biomarkers. The encoded preproprotein is proteolytically processed to generate the mature protease. Expression of this protease is regulated by steroid hormones and may be elevated in multiple human cancers and in serum from psoriasis patients. The encoded protease may participate in the cleavage of amyloid precursor protein and alpha-synuclein, thus implicating this protease in Alzheimer's and Parkinson's disease, respectively. This gene is located in a gene cluster on chromosome 19. Alternative splicing results in multiple transcript variants, at least one of which encodes an isoform that is proteolytically processed</p>
Form	Lyophilized powder
Molecular Mass	27 kDa

 Tel: 1-631-559-9269 1-516-512-3133

 Email: info@creative-biomart.com  Fax: 1-631-938-8127

 45-1 Ramsey Road, Shirley, NY 11967, USA

Purity	> 95%, determined by SDS-PAGE under reducing conditions and visualized by Coomassie blue staining
Applications	ELISA, Western blotting, Dot Blotting, Immunogen, Protein Array
Storage	Upon arrival, the lyophilized protein may be stored for 2 weeks at 4 centigrade. For long term storage, it is recommended to store desiccated below -20 centigrade in a manual defrost freezer. Following reconstitution, the protein may be stored for 2 weeks under sterile conditions at -20 centigrade. For long term storage, it is recommended to make appropriate aliquots and store at -80 centigrade. Avoid repeated freeze-thaw cycles.
Storage Buffer	Lyophilized from a 0.2 μ m filtered 0.1 M NaHCO ₃ and 0.5 M NaCl (pH 8.3) solution with the protein concentration of 1.42 mg/mL.
Reconstitution	Briefly spin the vial and bring the contents to the bottom prior to opening. It is recommended to reconstitute at 0.1-1 mg/mL with sterile ice-cold deionized water or 1X Phosphate Buffered Saline (PBS). This solution can then be further diluted into other aqueous buffers.

GENE INFORMATION

Gene Name	KLK6 kallikrein related peptidase 6 [Homo sapiens (human)]
Official Symbol	KLK6
Synonyms	KLK6; kallikrein related peptidase 6; hK6; Bssp; Klk7; SP59; PRSS9; PRSS18;
Gene ID	5653
mRNA Refseq	NM_002774

 Tel: 1-631-559-9269 1-516-512-3133

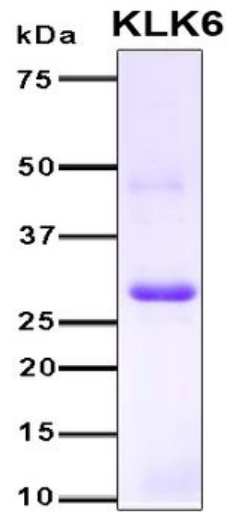
 Email: info@creative-biomart.com  Fax: 1-631-938-8127

 45-1 Ramsey Road, Shirley, NY 11967, USA

Protein Refseq NP_002765

MIM 602652

UniProt ID Q92876



 Tel: 1-631-559-9269 1-516-512-3133

 Email: info@creative-biomart.com  Fax: 1-631-938-8127

 45-1 Ramsey Road, Shirley, NY 11967, USA