

# Recombinant Human KLK7 Protein (Glu23-Arg253), N-GST tagged

Cat. No. KLK7-5019H Lot. No. (See product label)

## SPECIFICATION

<b>Product Overview</b>	Recombinant human KLK7 (Glu23-Arg253) fused with the N-GST tag was expressed in E. coli.
<b>Species</b>	Human
<b>Source</b>	E.coli
<b>ProteinLength</b>	Glu23-Arg253
<b>Form</b>	Lyophilized powder/frozen liquid
<b>Molecular Mass</b>	52.05 kDa
<b>Purity</b>	>90% as determined by SDS-PAGE.
<b>Notes</b>	For research use only.
<b>Storage</b>	Use a manual defrost freezer and avoid repeated freeze thaw cycles. Store at 2 to 8 centigrade for one week. Store at -20 to -80 centigrade for twelve months from the date of receipt.
<b>Storage Buffer</b>	0.01M PBS, pH 7.4, 0.02% NLS
<b>Reconstitution</b>	Reconstitute in sterile water for a stock solution.

 Tel: 1-631-559-9269 1-516-512-3133

 Email: [info@creative-biomart.com](mailto:info@creative-biomart.com)  Fax: 1-631-938-8127

 45-1 Ramsey Road, Shirley, NY 11967, USA

**Shipping**

They are shipped out with dry ice/blue ice unless customers require otherwise.

**GENE INFORMATION**
**Gene Name**

KLK7 kallikrein-related peptidase 7 [ Homo sapiens (human) ]

**Official Symbol**

KLK7

**Synonyms**

KLK7; kallikrein-related peptidase 7; kallikrein 7 (chymotryptic, stratum corneum), PRSS6; kallikrein-7; SCCE; signal protein; serine protease 6; stratum corneum chymotryptic enzyme; kallikrein 7 (chymotryptic, stratum corneum); hK7; PRSS6;

**Gene ID**

5650

**mRNA Refseq**

NM\_001243126

**Protein Refseq**

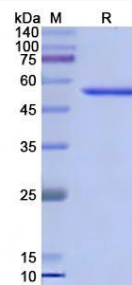
NP\_001230055

**MIM**

604438

**UniProt ID**

P49862

**SDS-PAGE**


Tel: 1-631-559-9269 1-516-512-3133

Email: [info@creative-biomart.com](mailto:info@creative-biomart.com) Fax: 1-631-938-8127

45-1 Ramsey Road, Shirley, NY 11967, USA