

Recombinant Human KLK7 Protein, Myc/DDK-tagged, C13 and N15-labeled

Cat. No. KLK7-889H **Lot. No.** (See product label)

SPECIFICATION

Product Overview	KLK7 MS Standard C13 and N15-labeled recombinant protein (NP_005037) with a C-terminal MYC/DDK tag, was expressed in HEK293 cells.
Species	Human
Source	HEK293
Description	<p>This gene encodes a member of the kallikrein subfamily of serine proteases. These enzymes have diverse physiological functions and many kallikrein genes are biomarkers for cancer. The encoded protein has chymotrypsin-like activity and plays a role in the proteolysis of intercellular cohesive structures that precedes desquamation, the shedding of the outermost layer of the epidermis. The encoded protein may play a role in cancer invasion and metastasis, and increased expression of this gene is associated with unfavorable prognosis and progression of several types of cancer. Polymorphisms in this gene may play a role in the development of atopic dermatitis. Alternatively spliced transcript variants encoding multiple isoforms have been observed for this gene, which is one of fifteen kallikrein subfamily members located in a gene cluster on chromosome 19.</p>
Molecular Mass	27.6 kDa
AA Sequence	MARLLLLPLQILLLSLALETAGEEAQGDKIIDGAPCARGSHPWQVALLSGNQLHCGG VLVNERWVLTAAHCKMNEYTVHLGSDTLGDRRAQRIKASKSFRHPGYSTQTHVNDL

 Tel: 1-631-559-9269 1-516-512-3133

 Email: info@creative-biomart.com  Fax: 1-631-938-8127

 45-1 Ramsey Road, Shirley, NY 11967, USA

MLVKLNSQARLSSMVKKVRLPSRCEPPGTTCTVSGWGTTTSPDVTFPSDLMCVDV
 KLISPQDCTKVYKDLENSMLCAGIPDSKKNACNGDSGGPLVCRGTLQGLVSWGTF
 PWGQPNDPGVYTQVCKFTKWINDTMKKHRTRTRPLEQKLISEEDLAANDILDYKDD
 DDKV

Purity > 80% as determined by SDS-PAGE and Coomassie blue staining

Stability Stable for 3 months from receipt of products under proper storage and handling conditions.

Storage Store at -80 centigrade. Avoid repeated freeze-thaw cycles.

Concentration 50 µg/mL as determined by BCA

Storage Buffer 100 mM glycine, 25 mM Tris-HCl, pH 7.3.

GENE INFORMATION

Gene Name [KLK7 kallikrein-related peptidase 7 \[Homo sapiens \(human\) \]](#)

Official Symbol [KLK7](#)

Synonyms KLK7; kallikrein-related peptidase 7; kallikrein 7 (chymotryptic, stratum corneum), PRSS6; kallikrein-7; SCCE; signal protein; serine protease 6; stratum corneum chymotryptic enzyme; kallikrein 7 (chymotryptic, stratum corneum); hK7; PRSS6;

Gene ID [5650](#)

mRNA Refseq [NM_005046](#)

Protein Refseq [NP_005037](#)

 Tel: 1-631-559-9269 1-516-512-3133

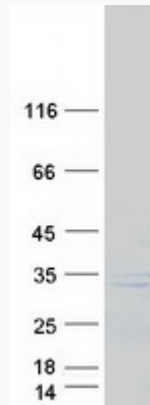
 Email: info@creative-biomart.com  Fax: 1-631-938-8127

 45-1 Ramsey Road, Shirley, NY 11967, USA

MIM 604438

UniProt ID P49862

SDS-PAGE



 Tel: 1-631-559-9269 1-516-512-3133

 Email: info@creative-biomart.com  Fax: 1-631-938-8127

 45-1 Ramsey Road, Shirley, NY 11967, USA